

Technical Note



Migrating from the MVI46-MNET to the PLX3x-EIP-MBTCP

Document Code: TN-PLX31EIPMBTCP_Migrating from MVI46-MNET_01-1904

Date: April 10, 2019

Revision: 1



How to Contact Us

Asia Pacific

Regional Office

+60.3.7941.2888

support.ap@prosoft-technology.com

North Asia

(China, Hong Kong)

+86.21.5187.7337

support.ap@prosoft-technology.com

Europe/Middle East/Africa

Regional Office

+33.(0)5.34.36.87.20

support.emea@prosoft-technology.com

Latin America

Regional Office

+52.222.264.1814

support.la@prosoft-technology.com

North America

Corporate Office

+1.661.716.5100

support@prosoft-technology.com

IMPORTANT NOTE 1

There are two nearly identical versions of the PLX3x gateway, but it is important to select the correct one based on the network topology:

- PLX31-EIP-MBTCP: Has a single ethernet port and requires that both the EtherNet/IP and the Modbus/TCP networks be on the same network subnet.
- PLX32-EIP-MBTCP: Has dual ethernet ports and requires that the EtherNet/IP and the Modbus/TCP networks be on different network subnets.

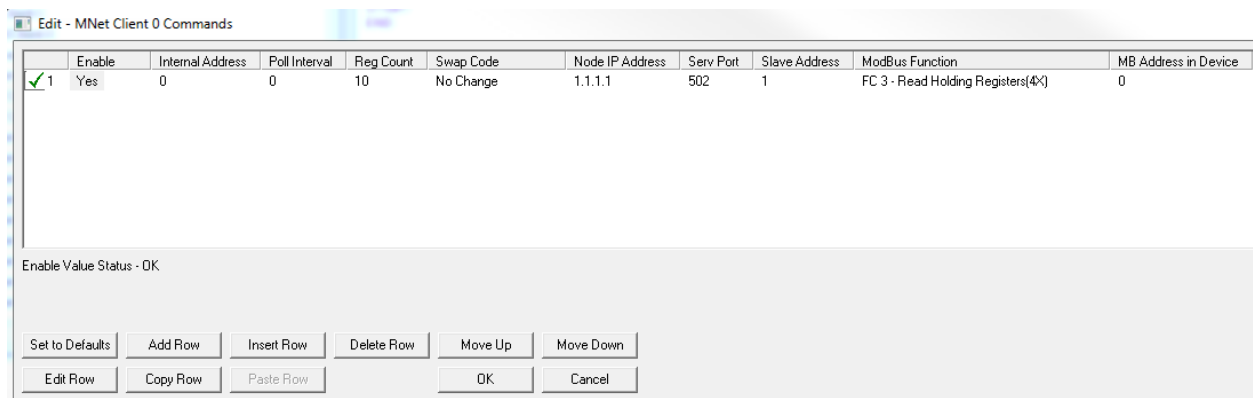
IMPORTANT NOTE 2

Use of the PLX3x-EIP-MBTCP requires EtherNet/IP connectivity to move data with the Allen-Bradley side.

- Only the SLC 5/05 series has EtherNet/IP connectivity.

Modbus Command Configuration

The MVI46-MNET Modbus Client Command configuration:

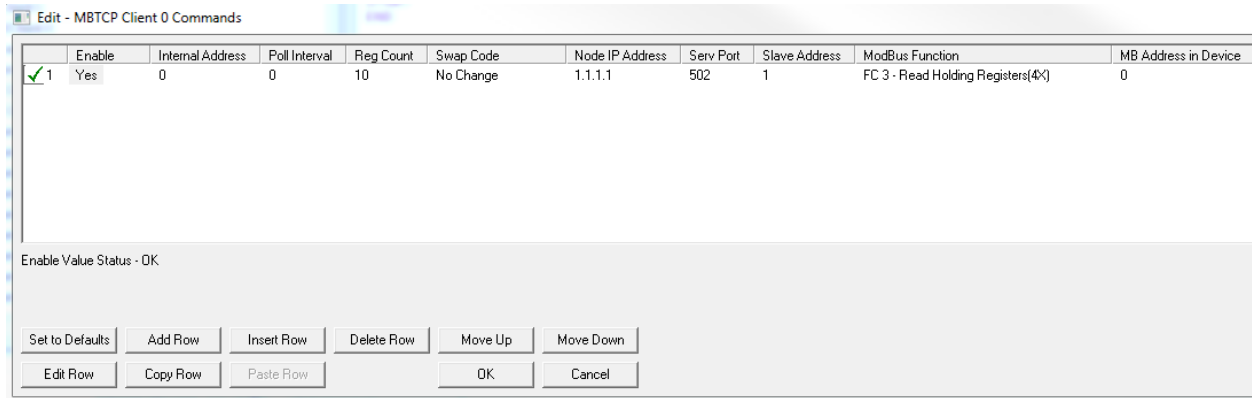


	Enable	Internal Address	Poll Interval	Reg Count	Swap Code	Node IP Address	Serv Port	Slave Address	ModBus Function	MB Address in Device
✓ 1	Yes	0	0	10	No Change	1.1.1.1	502	1	FC 3 - Read Holding Registers(4X)	0

Enable Value Status - OK

Set to Defaults Add Row Insert Row Delete Row Move Up Move Down
 Edit Row Copy Row Paste Row OK Cancel

Is identical to the PLX3x-EIP-MBTCP Modbus Client Command configuration:

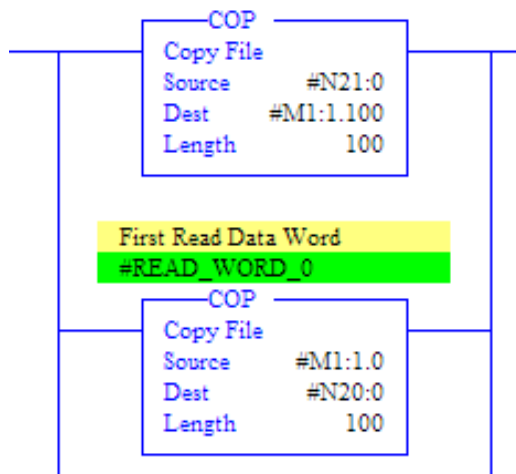


	Enable	Internal Address	Poll Interval	Reg Count	Swap Code	Node IP Address	Serv Port	Slave Address	ModBus Function	MB Address in Device
✓ 1	Yes	0	0	10	No Change	1.1.1.1	502	1	FC 3 - Read Holding Registers(4x)	0

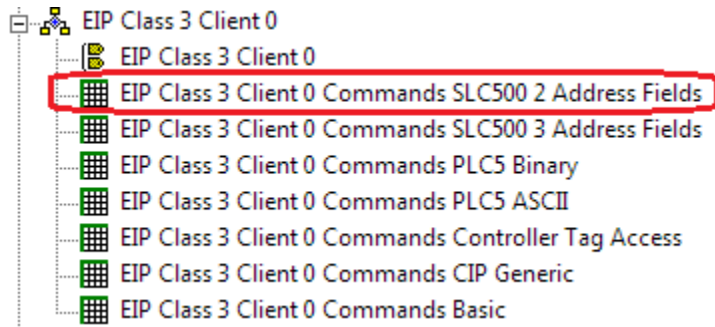
Enable Value Status - OK

Replacing backplane transfers with EtherNet/IP

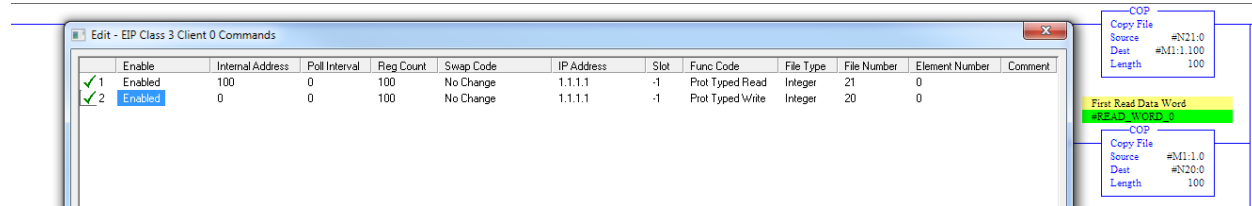
You will want to identify the ladder logic in the SLC program that is responsible for transferring Modbus application data to-and-from the MVI46-MNET module. Both input and output is handled through the M1 table:



However, with the PLX gateway being a standalone unit, data transfer with the PLC program would have to be handled differently. You can recreate similar behavior with the EtherNet/IP Commands, and specifically, the Class 3 Client, SLC500 2 Address Field commands:



The offset into the M1 table serves as the Internal Address location within the ProSoft's memory database. Therefore, to recreate the backplane transfers shown above with Class 3 Client SLC500 2 Address Field commands, they could be configured as:



The Internal Address matches the offset into the M1 table. The Reg Count matches the Length of the COP command. Read/Write perspective is from the PLX gateway, so the Prot Typed Read command is for moving data into the PLX gateway. Therefore, the N table reference matches the first COP command which was moving data into the MVI46-MNET module. The Prot Typed Write command moves data into the PLC program and so uses the same N20 reference.

After configuring the Modbus/TCP commands identically on both products, and then configuring equivalent EtherNet/IP Class 3 Client commands as shown above, the PLX3x-EIP-MBTCP gateway should function essentially as a drop-in replacement for the MVI46-MNET module.