



Authorised  
Distributor

A ROCKWELL AUTOMATION PARTNER



# UNLOCKING VALUE

Through Augmented  
Maintenance & Safety for  
Intelligent Motor Control  
Centers

► BEGIN





# Motor Control Centers are critical to operations

Presenting Rockwell AMS, the augmented maintenance and safety solution to unlocking new MCC value.

This digital overlay experience brings data to life by transforming 2D into 3D. Rockwell AMS makes work accessible via mobile and cloud based tools, and moves worker experiences into AR, making them more interactive.



# Assessment Potential Realized Value

# \$5M+

Potential Financial Improvement

## With These Solutions

Real Time Product  
Monitoring

-

Augmented Remote  
Assistance

-

Digital Frontline  
Functionality

## Improving These Metrics

▲ **10%**

Service Response Time

▲ **7%**

Production Uptime

▼ **14%**

Mean Time to Repair

## Achieving This Value

# \$6M

Reduction in Capital  
Equipment Sustainability

# \$4M

Downtime Avoidance & Rapid  
Return to Service

# \$5M

Optimize Labor  
Productivity



# Production Outages and Safety

An unplanned outage can cost major industries more than \$200k per minute, meaning saving even just 15 minutes in any given year is a win.

# The high cost of downtime

## Production Outages



### MAINTENANCE EFFICIENCY

It's a modern worker experience. Who wants to go to a manual anymore?



### SAFETY

A Fortune 20 company had a worker leave a LOTO device on an MCC which kept the plant down for hours.

# AMS has the potential to unlock significant savings



**50%**

Reduction in Downtime

- ▼ **40%** Reduction in maintenance cost
- ▼ **80%** Reduction in unsafe behavior
- ▲ **35%** Time **savings** reaching root cause
- ▼ **30%** Reduction in training time
- ▲ **48%** More **efficient** maintenance procedures
- ▼ **20%** Reduction in safety incidents
- ▲ **90%** Improvement in first-time right repair



# Augmented Maintenance & Safety

Digital augmentation of workers on the plant floor empowers people and leads to increased employee safety, productivity, and efficiency.

# Achieve your potential

## Reduce Production Costs

- Improve asset utilization

## Maximize Workforce Productivity

- Increased employee safety, productivity, and efficiency
- Accelerated employee ramp time

## Improve Safety & Compliance

- Reduce incidents and fines with improved safety protocols that empower confidence in your workforce.



# Reduce production costs with improved asset utilization



**Take immediate action  
based on status of MCC**

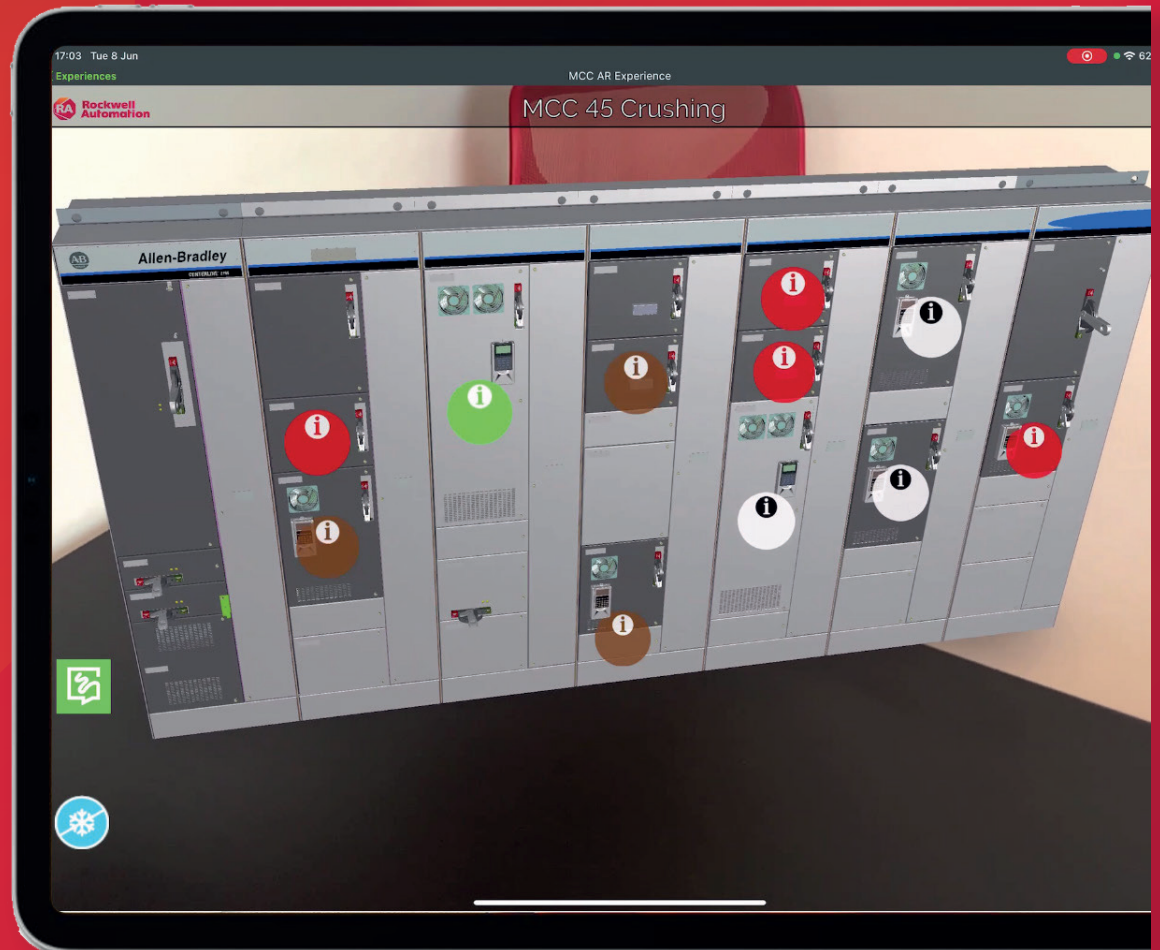


**Expedite maintenance  
with easy instructions**



**Ensure safe maintenance  
procedures**

**FACILITATE FASTER  
TROUBLESHOOTING AND REPAIR**

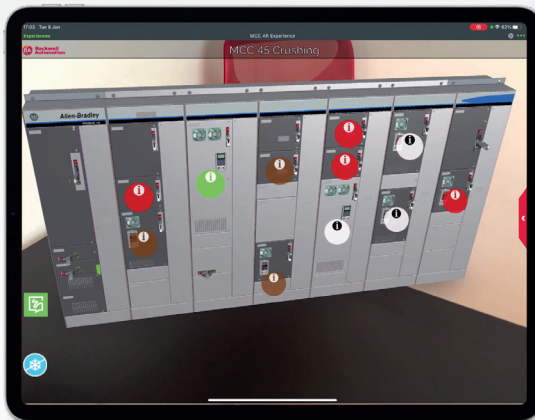




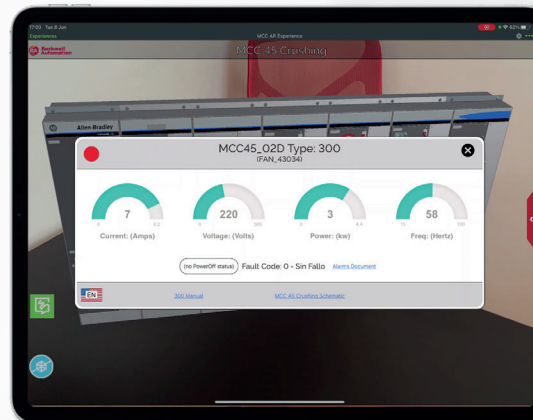
# Real time Status, identify failure & get all MCC information

- Augmented reality representation by simply scanning a QR code.
- Full visibility of real time status and key performance indicators (KPIs).
- Access KPI's from MCC's even in restricted areas.
- Dynamic gauges that blink if they require attention, with an easy to distinguish color-coded system.
- Download manuals.
- No limits on the complexity of your MCC's

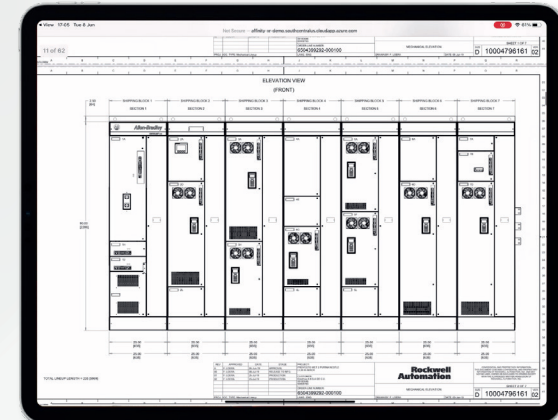
● Running
 ● Thermal Overload
 ● Fault/Failure
 ● Off



AR representation



Current, Voltage, Power and Freq.



Downloaded manual

# Maximize Workforce Productivity

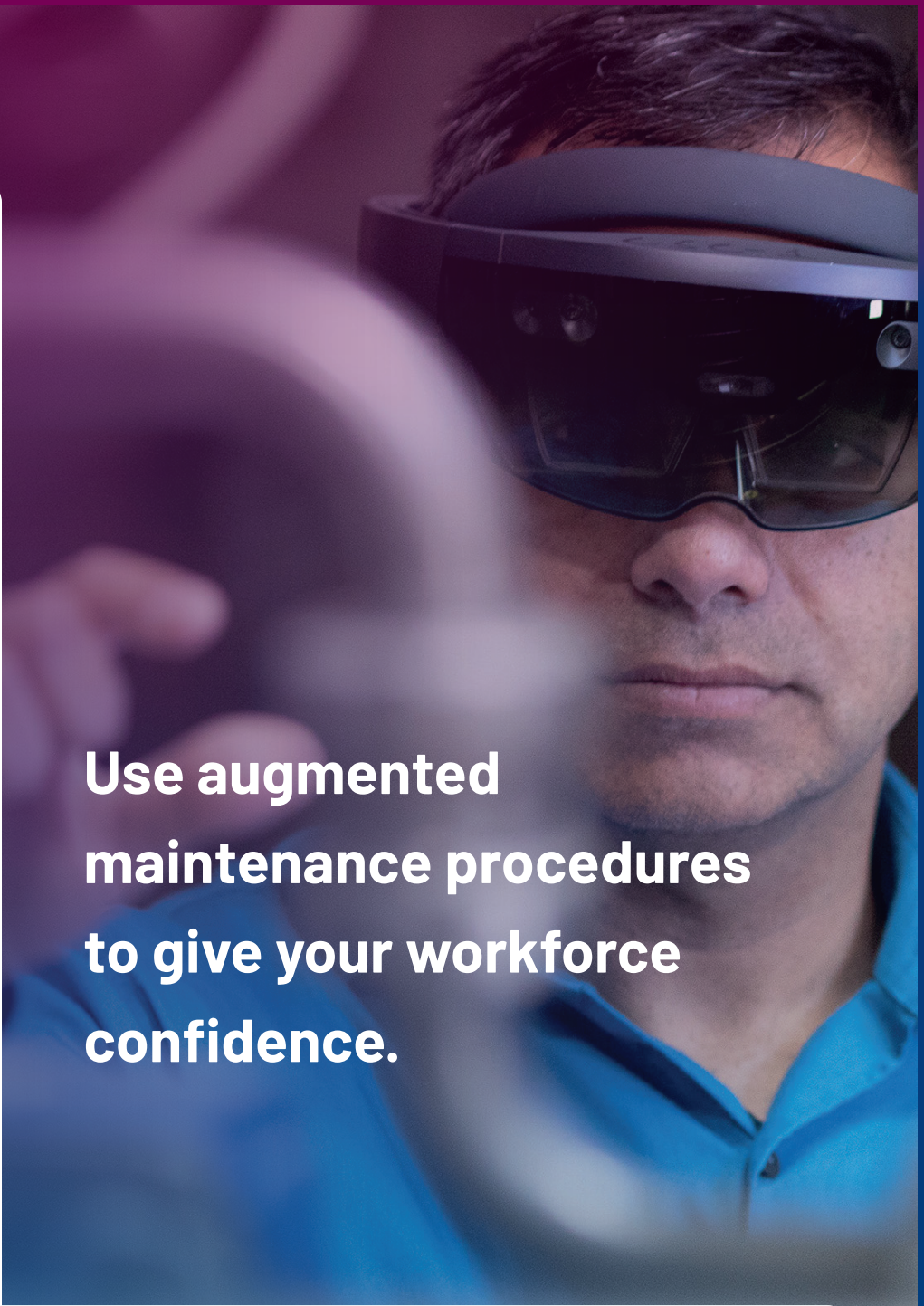
Traditional methods of empowerment like paper documentation, training classes, over-the-shoulder mentoring, and face-to-face troubleshooting are no longer viable.

# AR brings digital technology to the front line

Companies can no longer rely on the memory and skill retention of their operators and technicians to handle the increasing necessity to quickly adapt to complexity and variation of products and production lines.

Fortunately, AR fundamentally changes the way we can communicate information and knowledge. AR delivers new capabilities to improve productivity, agility and safety.

It allows us to present 3D digital models, visually augment work instructions, and expose relevant insights, such as from sensors or other digital sources. With AR, this content can be presented directly in the frontline workers field of view, relative to important context they see in the physical world where they're working.



**Use augmented maintenance procedures to give your workforce confidence.**



# The right information improves productivity, agility and stability

AMS changes everything – it improves productivity, increases quality and ensures safety & compliance.  
And most importantly, all of that unlocks value for you and your team.



**Increased safety**

**Easy knowledge capture**

**Easy remote collaboration**

**Clear, accurate work instructions**

**Faster documentation of SOPs**

**Highly effective training methods**

# Improve Safety and Compliance

Arc Flash incidences are unpredictable. While there are methods in place to prevent them from occurring, companies need to be prepared for the 'what if' scenario.

# Make unseen danger visible, warn users of the danger zone

AMS CAN IMPROVE SAFETY AND COMPLIANCE BY SHOWING ARC FLASH BOUNDRIES.

## TYPICAL SAFETY MEASURES

### Solution:

Safety zones are painted on the floor

### Result:

Standard painted distance barriers are often ignored

## AMS SAFETY MEASURES

### Solution:

Because Arc Flash is dynamic, the distance needs to vary

### Result:

A barrier that dynamically adjusts according to the conditions



THE VIRTUAL SAFETY BARRIER CAN HELP PREVENT THE RISK OF BEING EXPOSED TO THE ARCH FLASH BLAST ZONE, POTENTIALLY SAVING LIVES



# A value-driven implementation approach



## Discover

- Discover use cases
- Quantify business value



## Design

- Prototype
- Build
- Test



## Deliver

- Identify immediate hurdles
- Prioritize investments











AB MARKET ELEKTRİK OTOMASYON SANAYİ VE DİŞ TİCARET ANONİM ŞİRKETİ

**Merkez**

Abdi İpekçi Caddesi No: 129/5 34040 Bayrampaşa/İstanbul  
T: +90 212 674 80 60 pbx F: +90 212 674 80 65

**Şube | Depo**

Necip Fazıl Bulvarı Keyap F1 Blok No: 90 34775 Ümraniye/İstanbul  
T: +90 216 540 86 00 F: +90 216 540 86 01

abmarketotomasyon.com | satis@abmarketotomasyon.com

Connect with us.    

rockwellautomation.com

expanding human possibility®

AMERICAS: Rockwell Automation, 1201 South Second Street, Milwaukee, WI 53204-2496 USA, Tel: (1) 414.382.2000, Fax: (1) 414.382.4444

EUROPE/MIDDLE EAST/AFRICA: Rockwell Automation NV, Pegasus Park, De Kleetlaan 12a, 1831 Diegem, Belgium, Tel: (32) 2 663 0600, Fax: (32) 2 663 0640

ASIA PACIFIC: Rockwell Automation, Level 14, Core F, Cyberport 3, 100 Cyberport Road, Hong Kong, Tel: (852) 2887 4788, Fax: (852) 2508 1846

Expanding human possibility, Pavillion8, and Rockwell Automation are trademarks of Rockwell Automation, Inc.  
All other trademarks are property of their respective companies.

Publication INFO-BR022A-EN-P - January 2022

Copyright © 2022 Rockwell Automation, Inc. All Rights Reserved. Printed in USA.

◀ BACK