

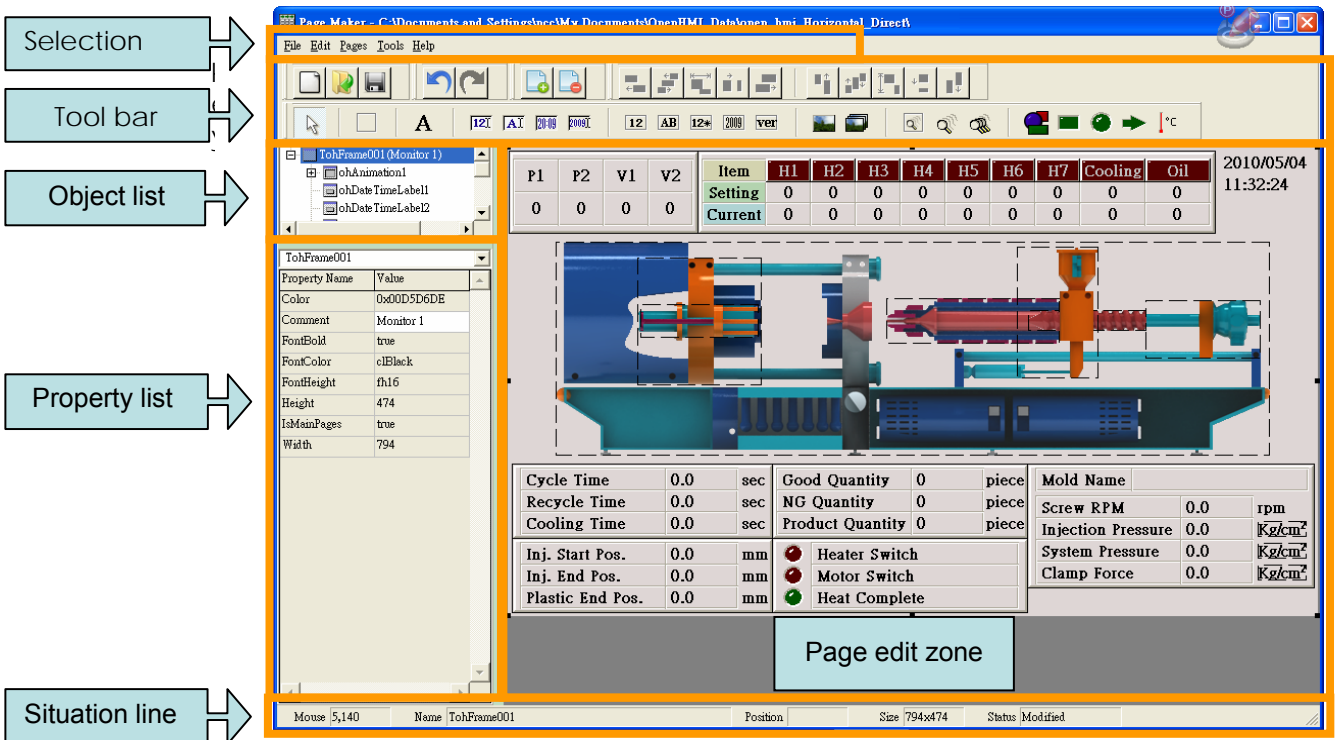
Subject	Open HMI Page Editor Manual	Doc. No.	
----------------	-----------------------------	-----------------	--

1 INTRODUCTION

This manual is to illustrate the using method of open HMI page editor for injection molding machine open, through this manual, you will learn how to use the page editor to design the HMI page for injection molding machine.

2 Page editor

Page editor (Picture 1) is as below, includes 6 areas : Selection menu, Tool bar, Object list, Property list, Page edit zone and Situation line.

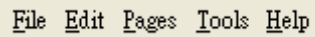


Picture (1)

Subject	Open HMI Page Editor Manual	Doc. No.	
----------------	-----------------------------	-----------------	--

2.1 Selection menu

Selection menu has 5 selections, as below picture (2) : File Edit, Pages, Tools, and Help.



Picture (2)

2.1.1 File

File has 5 selections, as below picture (3) : New, Open, Save, Save as, and Exit.



Picture (3)

New : Delete current situation, prepare to edit a new project.

Open : Open old project to edit.

Save : Save the current project, quick key: 『Ctrl』 + 『S』

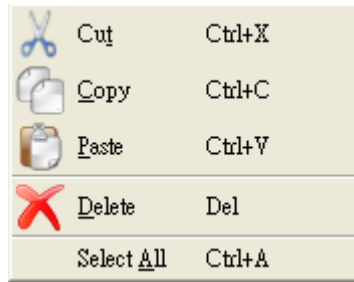
Save as : Save the current project to another directory.

Exit : Leave this program.

Subject	Open HMI Page Editor Manual	Doc. No.	
----------------	-----------------------------	-----------------	--

2.1.2 Edit

Edit has 5 selections, as below picture (4) : Cut, Copy, Paste, Delete, Select All.



Picture (4)

Cut: Cut the **selected components on the page edit zone**, quick key : 『Ctrl』 + 『X』

Copy: Copy the **selected components on the page edit zone**, quick key : 『Ctrl』 + 『C』

Paste: Paste the copy or cut components into the page, make it to be a sub-component, quick key : 『Ctrl』 + 『V』

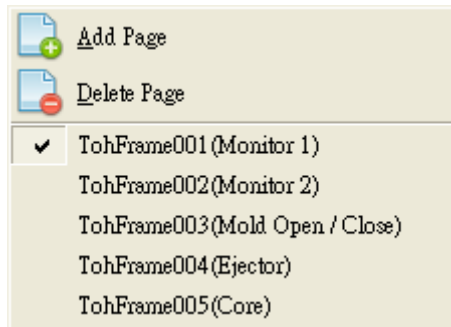
Delete: Delete the **selected components on the page edit zone**, or directly press 『Delete』

Select all: Select all the components on the page, quick key : 『Ctrl』 + 『A』

Subject	Open HMI Page Editor Manual	Doc. No.	
----------------	-----------------------------	-----------------	--

2.1.3 Pages

Pages has more than 2 selections, as below picture (5) :



Picture (5)

Add page: Add one more page to this project and show this page.

Delete page: Delete the current showing page.

From the line 3, these are the page lists that have been generated, current showing one will have a check mark on the front, as picture (5) ToFrame001(monitor1)

Subject	Open HMI Page Editor Manual	Doc. No.	
----------------	-----------------------------	-----------------	--

2.1.4 Project menu

Project menu has 8 sub options, see picture (6). They are Edit page, Edit button; Edit other page menu, Edit system counter list, Object Language string, String table, Number table, Macro.



Picture (6)

Page Edit: Display the edit page in edit area for editing the page.

Edit the menu button: display the menu button on edit area, for editing the menu button.

Edit other page menu: for display other page editor, to maintain the page not in open page.

Edit the system counter menu: display the system counter edit, for edit the system counter.

Object Language string: use for display the character string, it can "ADD", "Delete", "Edit" and "display the language string.

String table: It can "ADD string", "Delete String" and "Display the exist strings". If select "ADD or display strings" it will show the string Editor for edit the string.

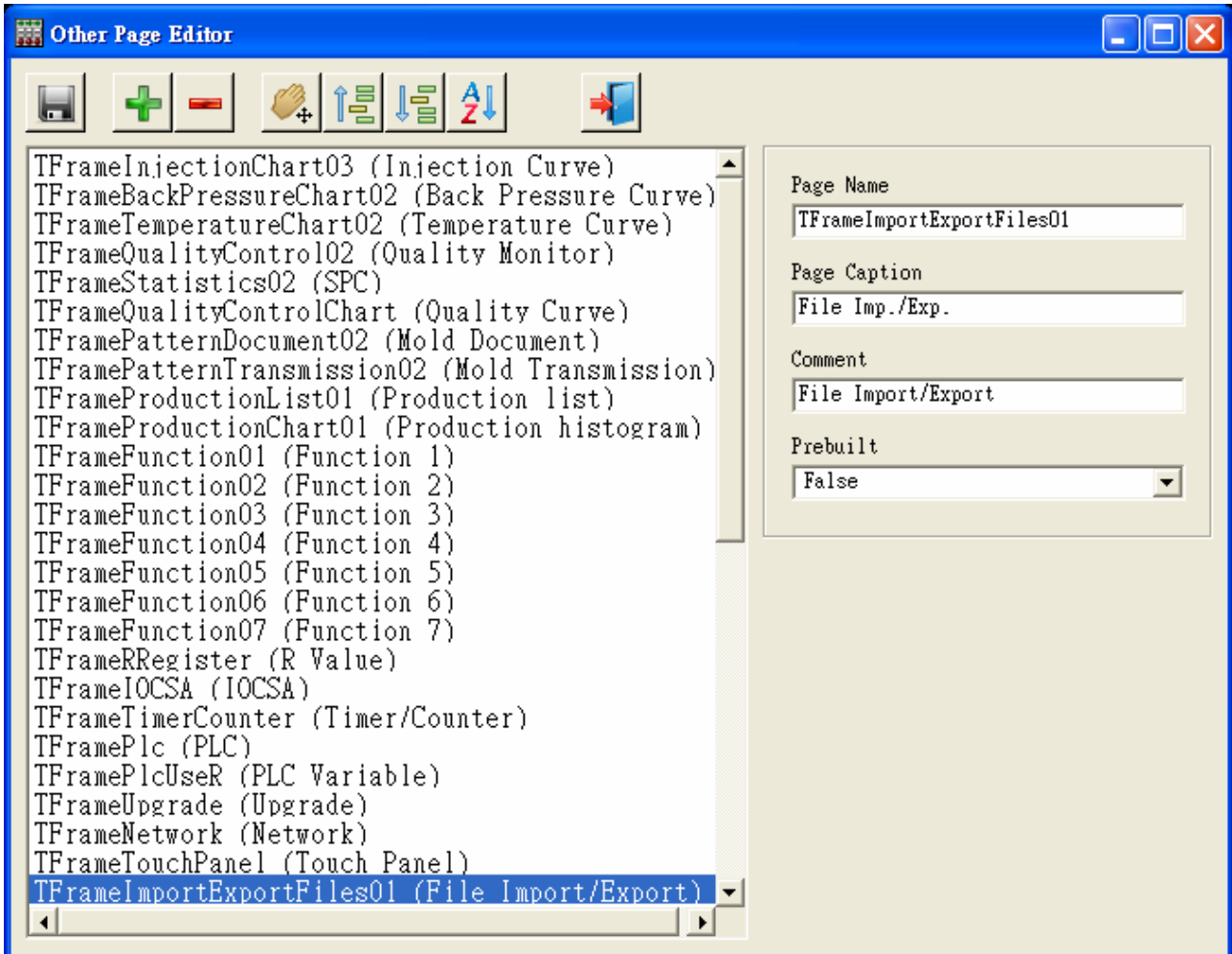
Number table: It can "Add number list", "Delete list" and "display existing number list". If select Add or display number list, it will show the "Number list editor.

Macro: it can choose "Add macro", "Delete Macro" and "Display Macros" it will show the macro editor for editing macro.

Subject	Open HMI Page Editor Manual	Doc. No.	
----------------	-----------------------------	-----------------	--

2.1.4.1 Other page editor

Other page editor see picture (7). Use for maintain the non-open page.



Picture (7)



Save: save the modified pages and current project.



Add: add other page at last line.



Delete: delete the selected page



Drag: use this function to drag the pages and rearrange the orders, this orders relay to the item orders at "Permission page" click once again to deactivate.

Date	2011/10/13	Page	6/ 89
-------------	------------	-------------	-------



Subject	Open HMI Page Editor Manual	Doc. No.	
----------------	-----------------------------	-----------------	--



Up: move the selected page order up.



Down: move the selected page order down.



Sort: Alphabetic sorting page order



Exit: exit and close other page editor.

Page name: setup the page name.

Page title: setup the page tile for display on tile bar.

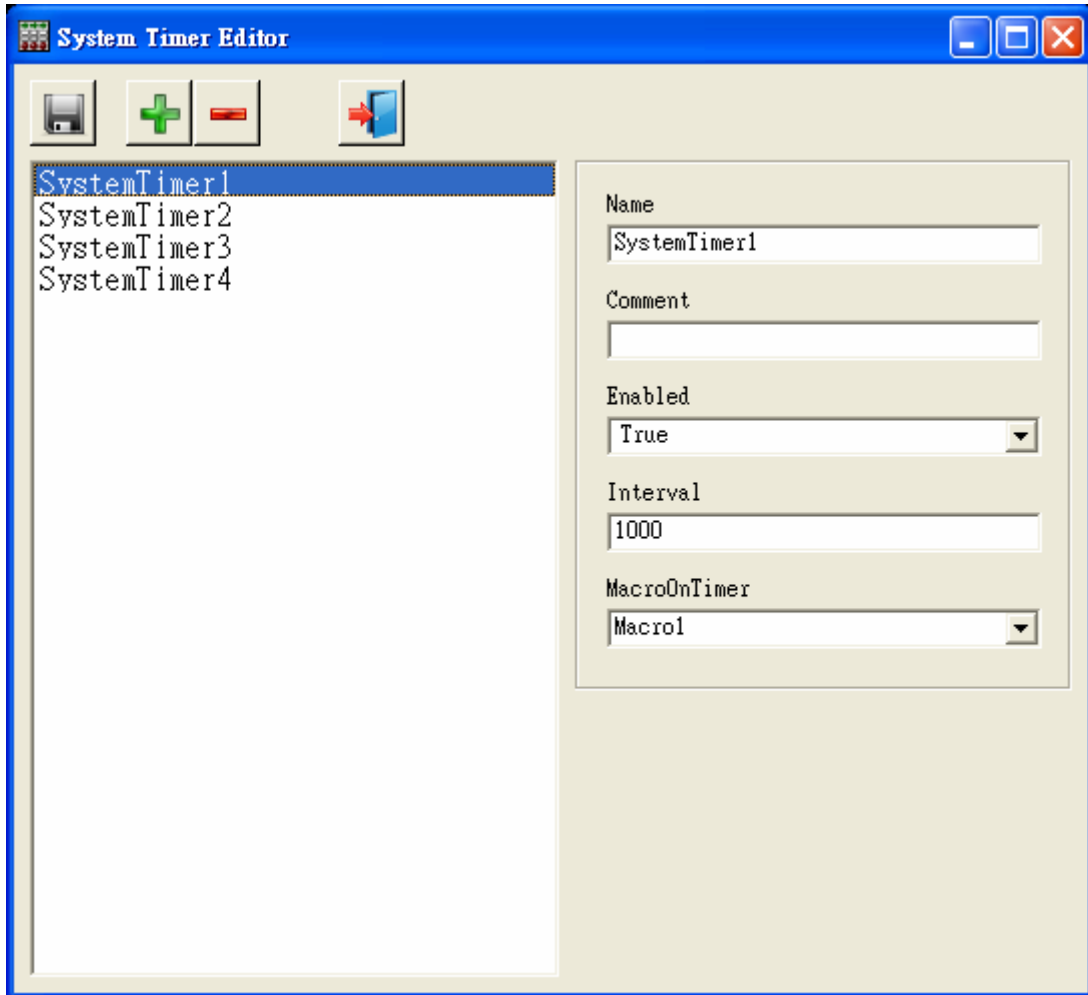
Note: setup the description on the editor.

Default setup page: if True, it will initial the page when start up controller. If false, it will initial the page when 1st time display.

Subject	Open HMI Page Editor Manual	Doc. No.	
----------------	-----------------------------	-----------------	--

2.1.4.2 System counter editor

System counters editor as picture (8). For maintain the system counter.



Picture (8)



Save: save the modified and current project.



Add: add system counter at last line.



Delete: delete the selected system counter.



Exit: exit this system counter editor.

Name: setup the system counter name.



Subject	Open HMI Page Editor Manual	Doc. No.	
----------------	-----------------------------	-----------------	--

Note: setup the system counter descriptions, only on this editor.

Activate the counter: setup if the system counter runs the timer Macro regularly. If the value is true, then the system counter will run the timer macro regularly. If the value is False, then it won't.

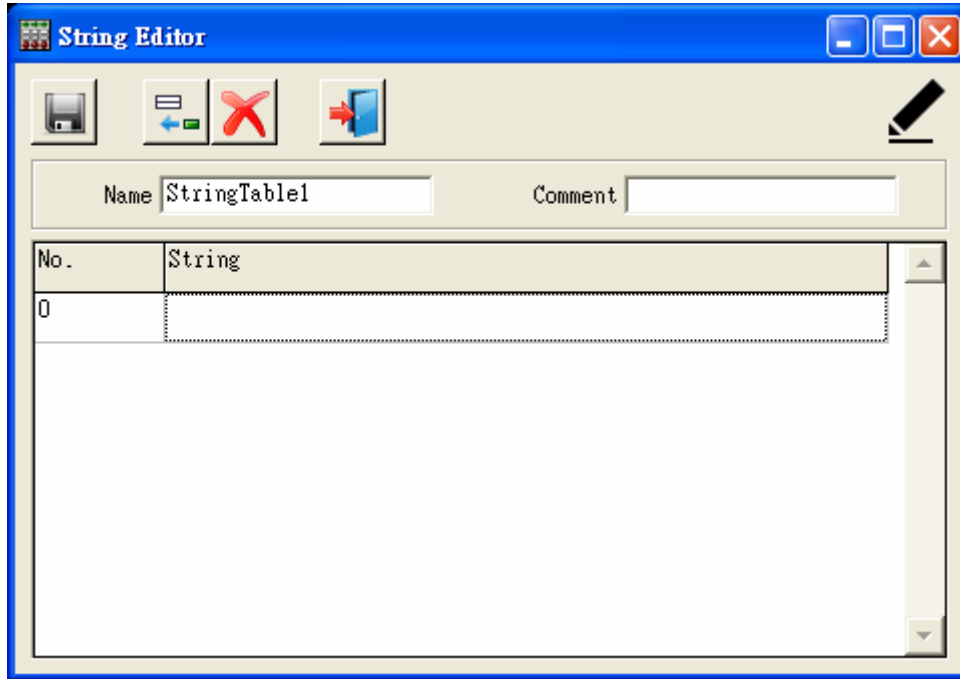
Timer Interval: times between macro runs, unit: MS.

Timing macro: select the wanted macro.

Subject	Open HMI Page Editor Manual	Doc. No.	
----------------	-----------------------------	-----------------	--

2.1.4.3 String table editor

String list editor as picture (9) for edit 1 string table.



Picture (9)



Save: save the modified string table and current file.



Insert: insert a string after the selected string.



Delete: delete the selected string.



Exit: exit the String editor.

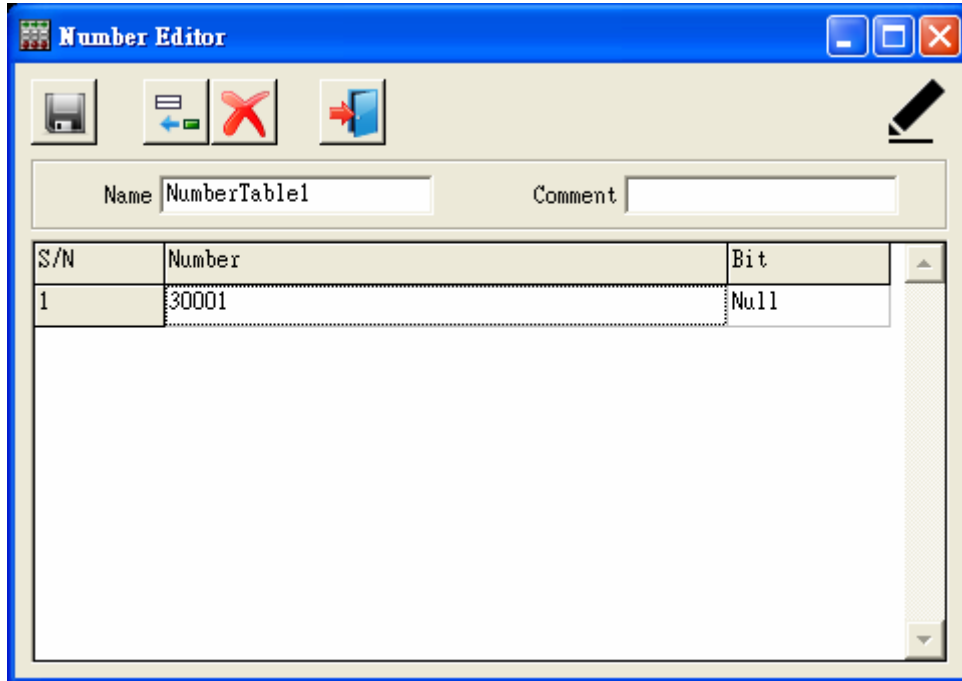
Name: Setup the string table name.

Note: set the descriptions.

Subject	Open HMI Page Editor Manual	Doc. No.	
----------------	-----------------------------	-----------------	--

2.1.4.4 Number table editor

Number table editor as picture (10). For edit 1 Number table.



Picture (10)



Save: Save the modified number list and current file.



Insert: insert a number after selected number.



Delete: delete the selected number.



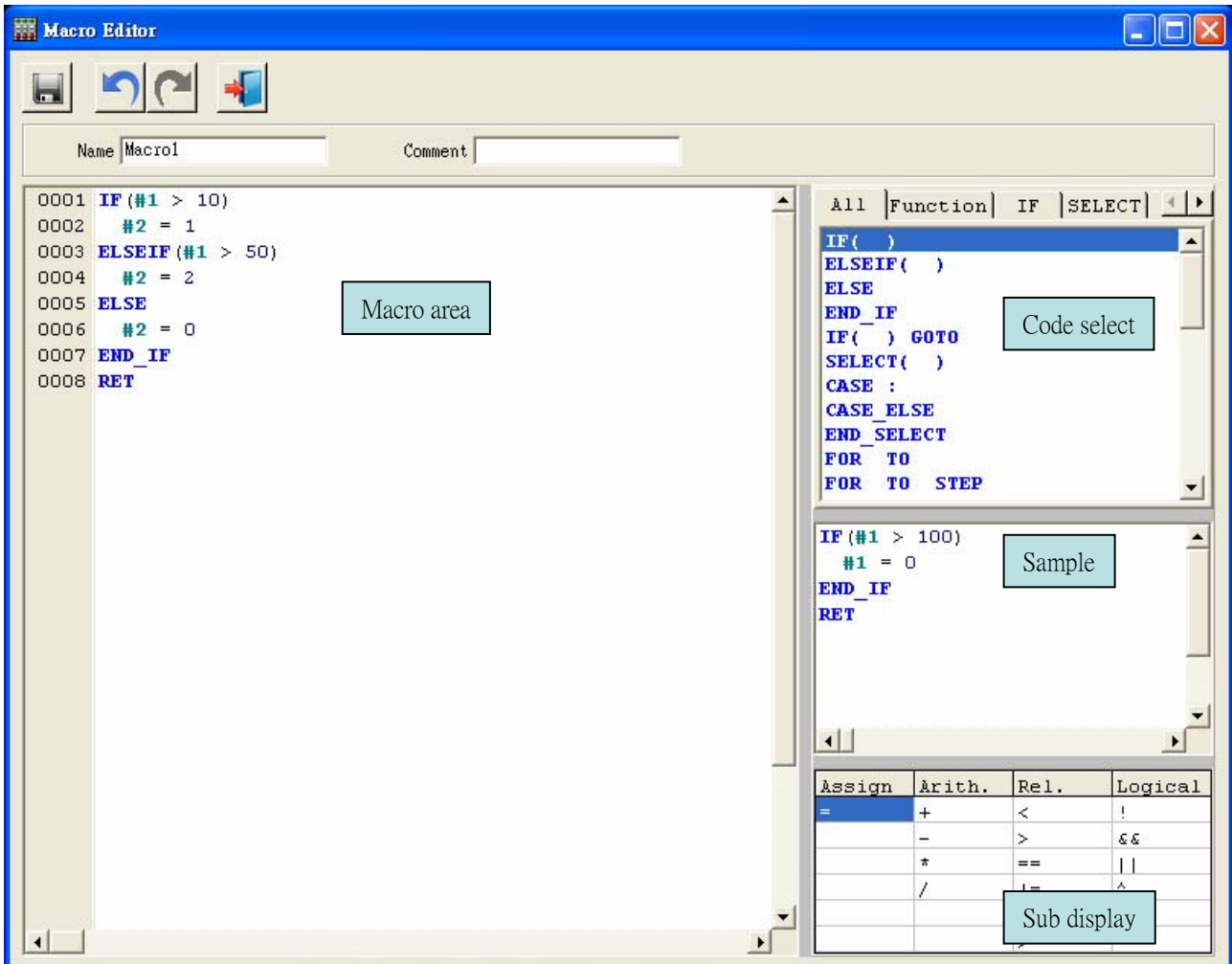
Exit: exit this string table editor.

Name: set up the string table name.

Note: setup the descriptions.

2.1.4.5 Macro editor

Macro editor shows as picture 11, for edit 1 macro.



Picture (11)



Save: save the modified and current Macro.



Undo: cancel last act.



Redo: redo the canceled act.



Exit: exit the macro editor.

Macro edit area: for edit macro.



Subject	Open HMI Page Editor Manual	Doc. No.	
----------------	-----------------------------	-----------------	--

Code select: list all the code and faction, double click to copy code to cursor at macro edit area.

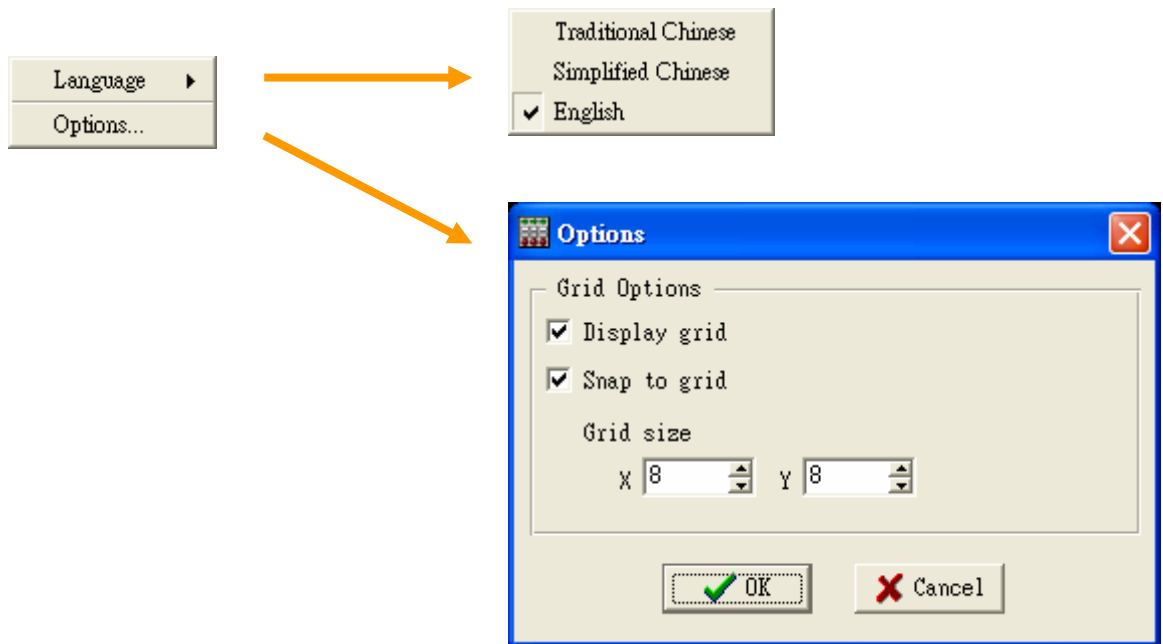
Sample display the code or faction sample.

Sub display: display all the calculate info, double click to copy code to cursor at macro edit area.

Subject	Open HMI Page Editor Manual	Doc. No.	
----------------	-----------------------------	-----------------	--

2.1.5 Tool

Tools have 2 selections, as below picture (12)



Picture (12)

Language : To set the language of page editor, there are 『Traditional Chinese』 , 『Simplified Chinese』 , 『English』 for selection. It will be valid after choosing.

Options: Display the grid options.

Display grid: display the grid spots for arrange the position.

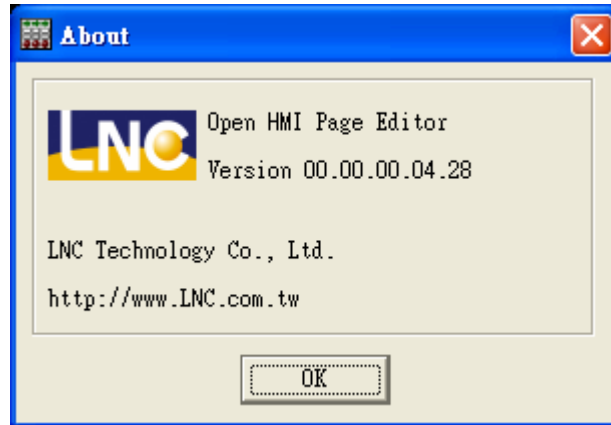
Snap to grid: object will automatically snap to grid.



Subject	Open HMI Page Editor Manual	Doc. No.	
----------------	-----------------------------	-----------------	--

2.1.6 Help

Help has 1 selection 『About...』, press the selection, it will pop out a about window to show the software version, as picture (13).

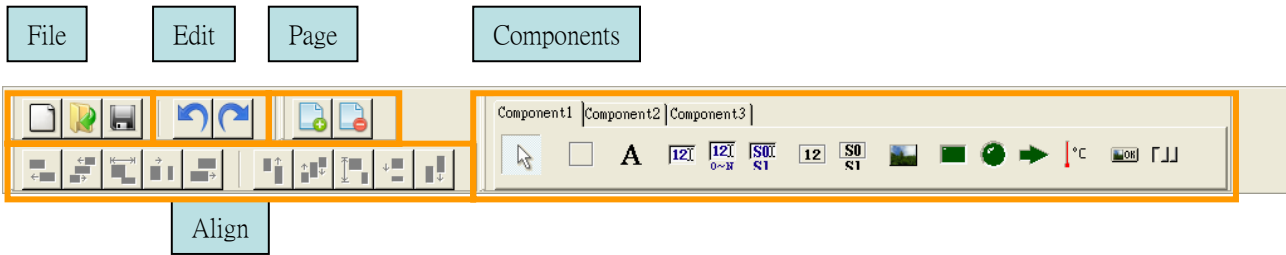


Picture (13)

Subject	Open HMI Page Editor Manual	Doc. No.	
----------------	-----------------------------	-----------------	--

2.2 Tool bar

Tool bar has 5 area shows as picture (14). They are: file, Edit, Page, Align, Components.



Picture (14)

2.2.1 File tool bar

It has 3 buttons, as below picture (15) : Open new, open old, Save.



Picture (15)



Open new : Delete current situation, prepare to edit a new project



Open old : Open old project to edit.



Save : Save the current project, short cut is 『Ctrl』 + 『S』 .

Subject	Open HMI Page Editor Manual	Doc. No.	
----------------	-----------------------------	-----------------	--

2.2.2 Edit

2 buttons at here show as picture (16), Undo and redo



Picture (16)



Undo: Cancel last act. Quick key, [Ctrl] + [Z]



Redo: Redo: redo the canceled act. [Ctrl] + [Shift] + [Z]

2.2.3 Page

It has 2 buttons, as below picture (17) : Add page, Delete page



Picture (17)



Add page : Add one page to this project and show this page.



Delete page : Delete the current page.

Subject	Open HMI Page Editor Manual	Doc. No.	
----------------	-----------------------------	-----------------	--

2.2.4 Align

This area's tool bar is for arranging components. Some buttons will be valid only if you choose two components on the page, some buttons will need to be 3 buttons. This area has 10 buttons on it, as below picture (18) : Align left edges , Align horizontal center, Center horizontally in the window, Space equally horizontally , Align right edges, Align top, Align vertical center, Center vertically in the window, Space equally vertically, Align bottoms.



Picture (18)



Align left edges : Choose more than 2 components, use first component to be standard; all other components will align to the left side of the first components.



Align horizontal center : Choose more than 2 components, use first component to be standard; all other components will align to the center of the first components.



Center horizontally in the window : Choose more than 1 component, use the horizontal way of all components to align to the component of upper layer's horizontal center.



Space equally, horizontally : You need to choose more than 3 components, use the horizontal way of all components to space equally.



Align right edges : You need to choose more than 2 components, use the first component to be standard, make all components' right edge to align to the first component's right edge.



Align tops : You need to choose more than 2 components, use the first component to be standard, make all components' top edge to align to the first component's top edge.



Align vertical center : You need to choose more than 2 components, use the first component to be standard, make all components' vertical center to align to the first component's vertical center.



Subject	Open HMI Page Editor Manual	Doc. No.	
----------------	-----------------------------	-----------------	--



Center vertically in window : You need to choose more than 1 component, use the vertical way of all components to align to the component of upper layer's vertical center.



Space equally, vertically : You need to choose more than 3 components, use the vertical way of all components to space equally.



Align bottoms : You need to choose more than 2 components, use the first component to be standard, make all components' bottom edge to align to the first component's bottom side.

Date	2011/10/13	Page	19/ 89
-------------	------------	-------------	--------

Subject	Open HMI Page Editor Manual	Doc. No.	
----------------	-----------------------------	-----------------	--

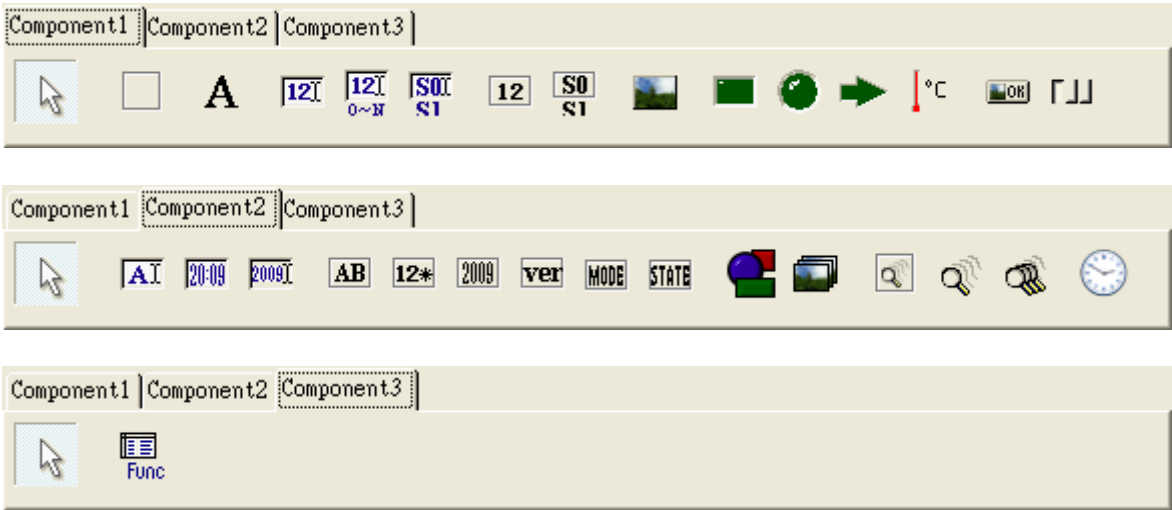
2.2.5 Component bar

This area is for you to add new components into page. Firstly, choose the component you want to add and appoint the location you want to put on. This component will show on the place. There are 30 buttons, as picture (19)

Component 1. Selection tool, component panel, label, settings, range value setting, status setting, display, status display, icon, box light, round light, arrow light, temperature, button and group. °


Component 2. Selection tool, text setting, time setting, date setting, text display setting, calculate display, date/ time display, version, sys mode, sys status, shape, graph, animation, animation sub objects, multiple object animation and page timer.


Component 3. Selection tool, function chart.



Picture (19)

Except the selection tool, following are description for other buttons:

 Selection tool : When this button is on, you are in the choose mode. You cannot add new component on choose mode, you can only choose component.

 Component Panel : When this button is on, you will add 『Panel』 component. You can use panel to be your upper component, you can put other components on the panel. This panel is for grouping components. If you put several components on the same panel, these components are relating ones.

Subject	Open HMI Page Editor Manual	Doc. No.	
----------------	-----------------------------	-----------------	--



Label: When this button is on, you will add 『Label』 component. It is to show text, you can input text directly.



Setting label : When this button is on, you will add 『Setting label』 component. This component is to let user input value into inner saving variables.



Setting range value: button ON: means “add range value setting”. It let user can input value to inner variable without creating the inner variable definition.



Status label setting: Button ON= add “Status label setting”. It let user input value to inner variable and displays the set status text.



Display setting: Button ON= add “display setting”. It uses for display inner value and ON/OFF status.



Status text setting: Button ON=add” status text setting”. It uses for display the set text according to inner value.



Icon: Button ON to insert icon, file must put in certain folder, support file type:ico · xpm · png · bmp · ddw.



Box light: Button ON= add” box light”. It can be ON/OFF by inner variable value.



Round light: Button ON= add” Round light”. It can be ON/OFF by inner variable value.



Arrow light: Button ON= add” Arrow light”. It can be ON/OFF by inner variable value.



Temperature: Button ON= add” Temperature icon to display the temperature value.”



Button: Button ON= add “Button”. It can let user input to inner value or execute macro.



Group: Button ON= add “Group button”. It can control certain buttons as a group, a group button only accepts 1 be on, others will be off.



Text setting: Button on= add” Text setting” Let user input to inner value.

Date	2011/10/13	Page	21/ 89
-------------	------------	-------------	--------

Subject	Open HMI Page Editor Manual	Doc. No.	
----------------	-----------------------------	-----------------	--



Time setting label : When this button is on, you will add 『Time setting 』 component. This component is to let user input time into inner saving variables. Format is as 『HH : SS 』 .



Date and time: Button ON= add "Date and time". Let user input date and time. The value must be one of year, month, day, hour, min, second.



Text display label : When this button is on, you will add 『Text display label 』 component. This component is to show inner saving text.



Calculation display label : When this button is on, you will add 『Calculation display label 』 component. This component is to show the value of inner saving variables after calculation.



Date-time display label : When this button is on, you will add 『Date-time display label 』 component. This component is to show date-time, you can choose to show system date/time or show date/time of inner saving variables.



Version display label : When this button is on, you will add 『Version display label 』 component. This component is to show the version of inner saving variables.



Sys mode: Button ON= add "Sys mode display". It can display system mode: e.g. Auto/ half auto/ manual.



Sys status: Button ON= add "Sys status". It use for display system status, e.g. Standby / close/ open.



Shape: Button ON= add "simple geometric shape".



Multiple graph: Button ON= add " Multiple graph" It can display multiple graphic, support file type:ico 、 xpm 、 png 、 bmp 、 ddw 。



Animate table: Button ON= add "animate table". Animation sub object must put on this to work animate.



Animated cell : When this button is on, you will add 『Animated cell 』 component. This component is to use on animation, it can move within panel region and this component need to be put on panel, it

Date	2011/10/13	Page	22/ 89
-------------	------------	-------------	--------

Subject	Open HMI Page Editor Manual	Doc. No.	
----------------	-----------------------------	-----------------	--

supports below formats, ico, xpm, png, bmp, ddw, jpg.



Multi-image animated cell: When this button is on, you will add『 Multi-image animated cell 』component.

This component is to use on multi-image animation. This component need to be put on panel, it supports below formats, ico, xpm, png, bmp, ddw, jpg.



Page timer: Button ON=add" page timer" It use for process the set timer macro.



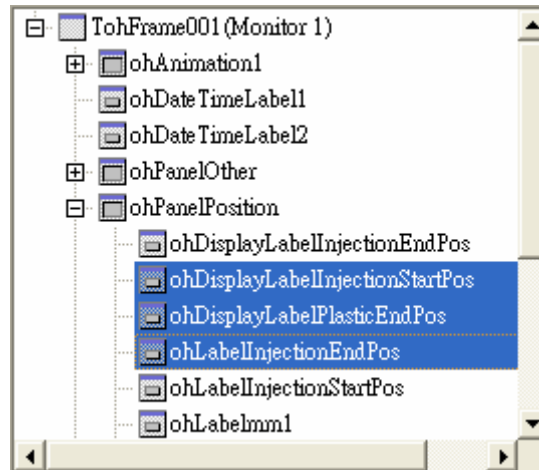
Func

Function chart: Button ON= add "Faction chart" It can let user input multiple value to set inner variable value, but need setup definition.

Date	2011/10/13	Page	23/ 89
-------------	------------	-------------	--------

2.3 Components browser

Object list shows the relationship of each component by tree-shape, as below picture (20). TohFrame001page has ohAnimation1, ohDateTimeLabel1, ohDateTimeLabel2...and ohPanelPosition component has ohDisplayLabelInjectionEndPos, ohDispalyLabelInjectionStartPos, ohDisplayLabelPlasticEndPos...



Picture (20)

You can choose the component from the object list. If you want to choose more components, it will need to be the same layer of components. Selection method is as below :

- 『Ctrl』 + 『mouse left key』 : Choose component one by one.
- 『Shift』 + 『mouse left key』 : Choose all components nearby.
- 『Shift』 + 『up/down key』 : Choose one by one with up/down key

Subject	Open HMI Page Editor Manual	Doc. No.	
----------------	-----------------------------	-----------------	--

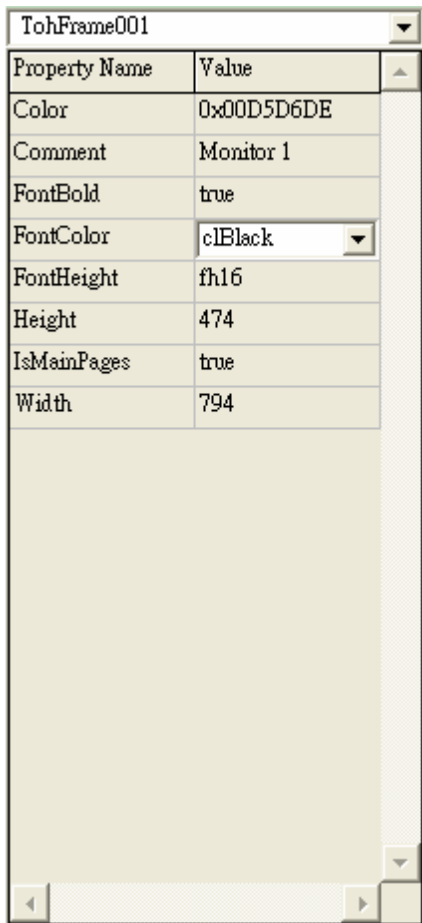
2.4 Property browser

Property list is to show/change the property of the selected component to change the function of this component, as picture (21-1).

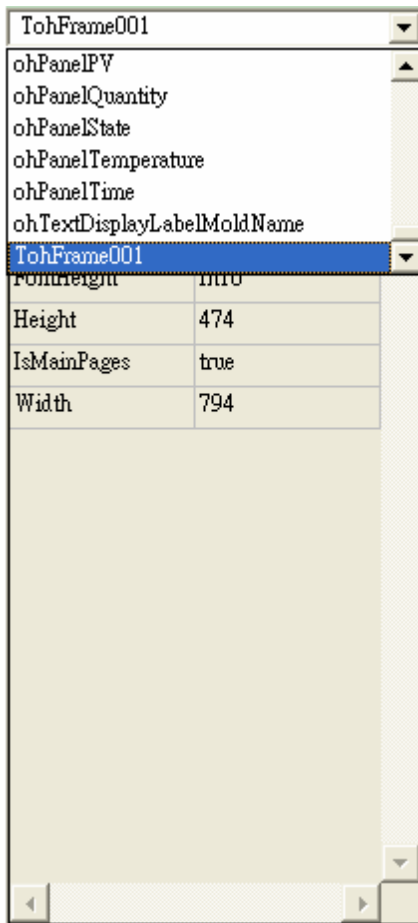
On the top of property list, it will show the current selected component. User can use drop-down menu to choose other component, as picture (21-2).

When making setting of component property, if the screen shows inverted triangle mark on the right side, it means that this function offers drop-down menu for you to choose different components, as picture(21-3).

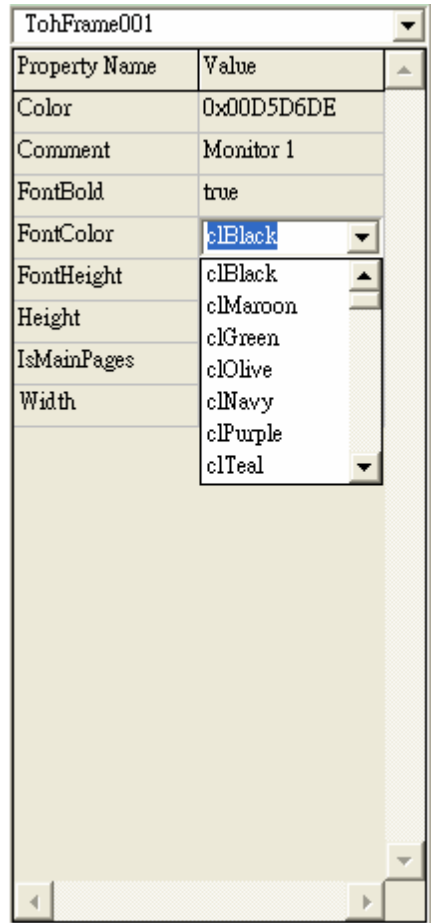
When making setting of component color, you can double-click color property to show color panel to choose, as picture (22).



Picture(21-1)

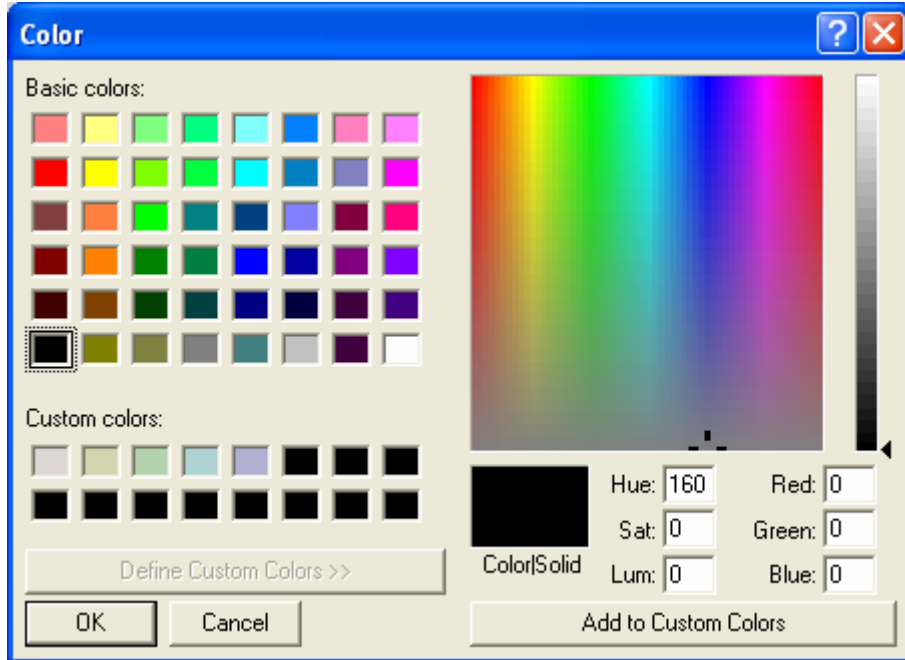


Picture (21-2)



Picture (21-3)

Subject	Open HMI Page Editor Manual	Doc. No.	
----------------	-----------------------------	-----------------	--

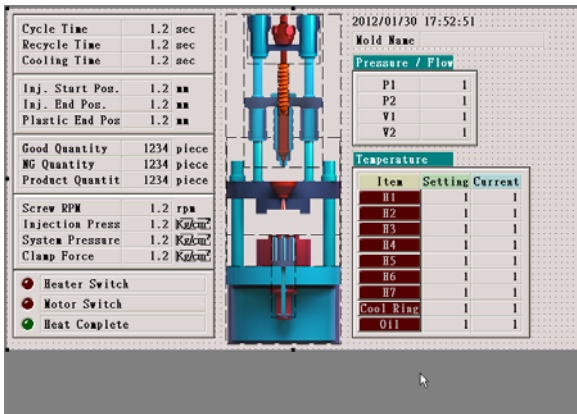


Picture (22)

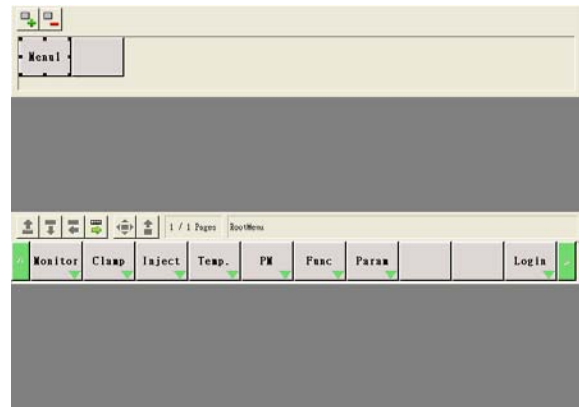
Subject	Open HMI Page Editor Manual	Doc. No.	
----------------	-----------------------------	-----------------	--

2.5 Page edit zone

The main function of page edit zone is to show the current editing page. User can use mouse to add, select new components or set components' location and size by dragging them, as picture (23-1). At the button page, you can control the button by mouse (add, delete and drag to set the orders) see picture (23-2).



Picture (23-1)



Picture (23-2)

2.5.1 Edit page

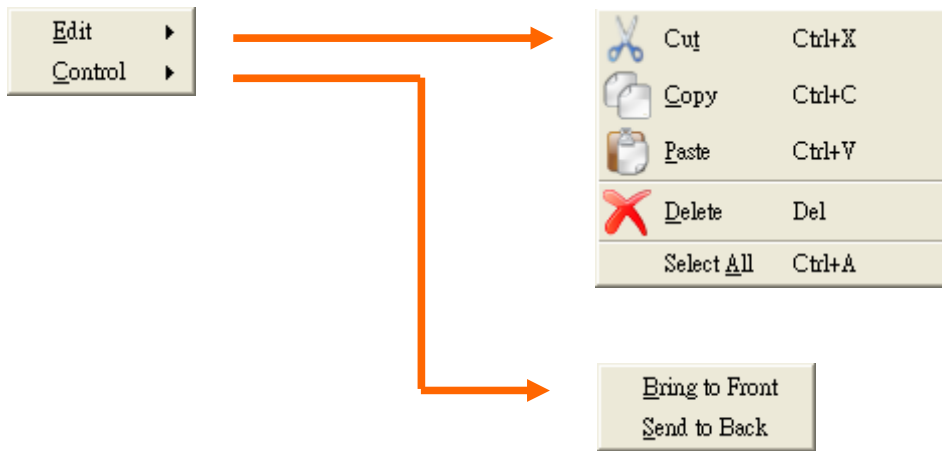
Add : If you want to add component on the page, you need to choose the component that you want to add on the component tool line, and use mouse left key to appoint the location on the page edit zone, then you can see the result on the page.

Select : Use mouse left key to click component directly on the page edit zone, you can choose this component and change its property on the property menu. If you want to choose many components at the same, they must belong to the same level. You can use 『 Shift 』 + 『 mouse left key 』 to choose many components.

Edit : After choosing component, you can drag the component to change its location and size, you can also use 『 Ctrl 』 + 『 direction key 』 to change the location of component or use 『 Shift 』 + 『 direction key 』 add/ minus to change the size of component.

Pop out menu : Press mouse right key on the edit zone, it will show a pop out menu, as picture (24), details are as below :

Subject	Open HMI Page Editor Manual	Doc. No.	
----------------	-----------------------------	-----------------	--



Picture (24)

Undo: cancel last act. Quick key 『Ctrl』 + 『Z』

Redo: redo the canceled act. Quick key 『Ctrl』 + 『Shift』 + 『Z』

Cut : Cut the selected components on the page edit zone, quick key : 『Ctrl』 + 『X』 .

Copy : Copy the selected components on the page edit zone, quick key : 『Ctrl』 + 『C』 .

Paste : Paste the copy or cut components into the page, make it to be a sub-component, quick key : 『Ctrl』 + 『V』 .

Delete : Delete the selected components on the page edit zone, or directly press 『Delete』 .

Select all: Select all the components on the page, quick key : 『Ctrl』 + 『A』

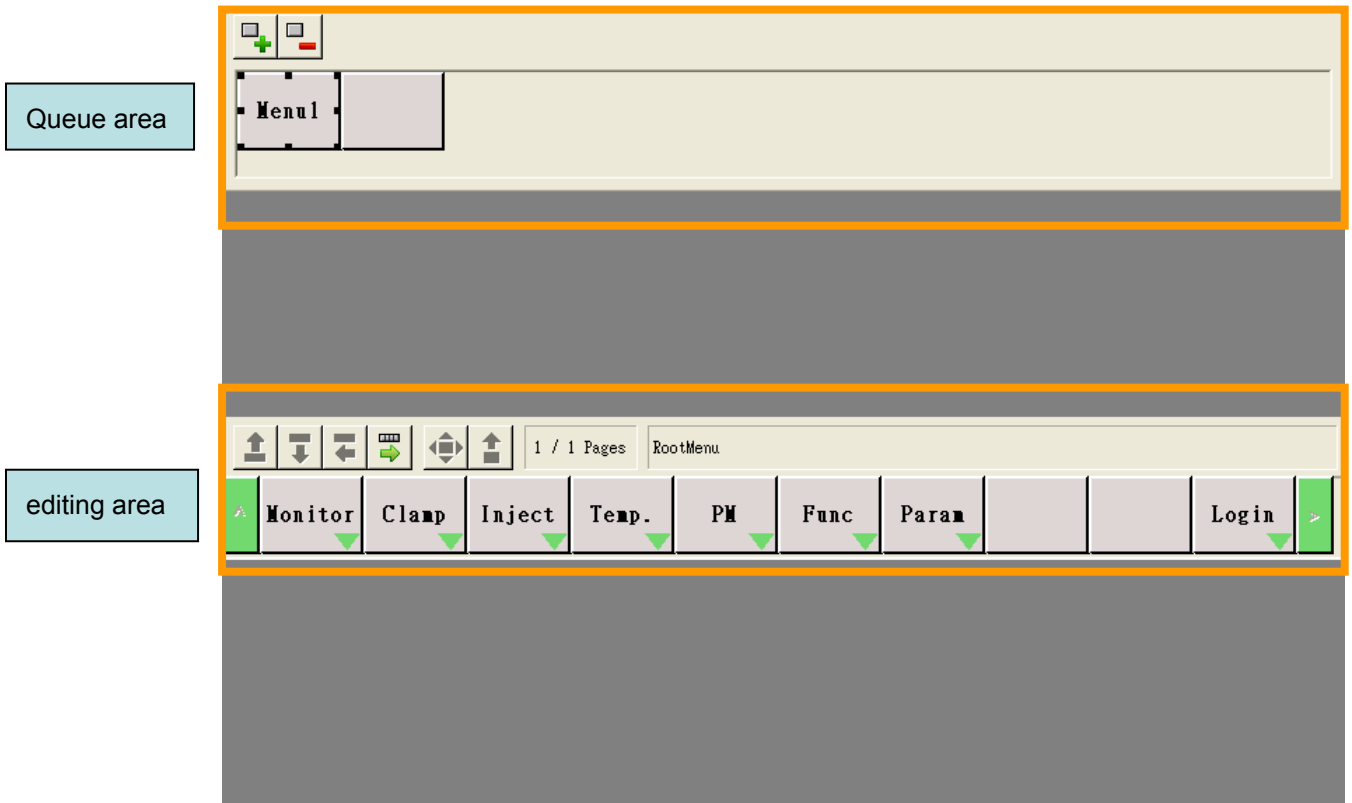
Make it to the top : Put the selected component on the edit zone to the top of all components. Usually, New component will be shown on the top, and other components will be shown on the below, but user can also use this function to make below components to show on the top. However, some components cannot be put on the top of other components, such as 『Image』 , 『Multi-image』 , 『Shape』 .

Make it to the bottom : Put the selected component on the edit zone to the bottom of all components.

Subject	Open HMI Page Editor Manual	Doc. No.	
----------------	-----------------------------	-----------------	--

2.5.2 Button table

Button table has 2 area, Queue area, and list editing area, as picture 25. Queue area uses for Add, Delete and keep the button not in used. Editing area is for arrange the button order. User can drag button between 2 areas.



Picture (25)



Add button: add new button to queue area.



Delete: delete selected button from queue area.



Upper level menu: show the upper level menu from current level at editing area.



Lower level menu: show the lower level menu from current level at editing area.



Previous page: Show the previous page of current at editing area.



Subject	Open HMI Page Editor Manual	Doc. No.	
----------------	-----------------------------	-----------------	--



Next page: Show the next page of current at editing area.



Move: Move the selected button to any list



Remove: remove the selected button in editing area to queue area.

Subject	Open HMI Page Editor Manual	Doc. No.	
----------------	-----------------------------	-----------------	--

2.6 Status bar

Status bar's purpose is to show the information of page editor, such as mouse coordinate, selected component name, selected component location, selected component width, edit situation, detail as below picture(26).

Mouse	342,356	Name	ohLabel1 :: TohLabel	Position	216,176	Size	144x22	Status	Modified
--------------	---------	-------------	----------------------	-----------------	---------	-------------	--------	---------------	----------

Picture (26)

Mouse : Show the location of mouse at the page. It will show X axis firstly, then Y axis (x, y). The original point is at the upper left corner, go right will be X axis opposite direction, go down will be Y axis opposite direction.

Name : Show the selected component name, component type name (component name: component type name)

If user selected many components at the same time, it will show the first component's information.

Component name can be changed by user, but component type name cannot be changed.

Location : Show the selected component location (x, y). If user selected many components at the same time, it will show the first component's information. Here the position is relative to the upper left corner of the upper component. Coordinate will take upper component's top left corner as the origin point. Component's left side position and top position is the same to the coordinate positioning method.

Width : Show the selected component width and height (WxH). If user selected many components at the same time, it will show the first component's information.

Status : If user has ever changed the project, it will show 『 modified 』 here, otherwise no message.

Subject	Open HMI Page Editor Manual	Doc. No.	
----------------	-----------------------------	-----------------	--

3 Component property

Use its special property to show the function of component. User can show component's different functions via different setting. Details are as below:

3.1 TohFrame

There are 15 properties of page, details are as below :

3.1.1 Caption: name display on the title bar

3.1.2 Color: Page background color, check color property for more details.

3.1.3 Comment: Comment will show at components browser, menu page. Due to page tile cannot be modified, so user can check comment for page instructions.

3.1.4 Focus Tag To R: This is an R value, controller will write the tag value to this R value.


3.1.5 Font Bold: Bold type for page font, value is

True : **ohDisplayLabel1**

False : ohDisplayLabel1


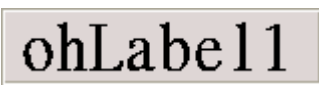
3.1.6 Font Color: Font color, refer to color property for details.

3.1.7 Font Height: Font height, available values are:

Fh12 : 12px height. Regular , bold is not available.

fh16 : 16 px heights. regular , bold is 

fh20 : 20 px heights. regular , bold is 

fh32 : 32 px heights. regular , bold is 

3.1.8 Height: page height

3.1.9 IsMainPages: defined the page location is main page (middle), value are True/ False.

3.1.10 MacroOnHide: Process macro when page hide.

3.1.11 MacroOnKeyDown: Process macro when press button.

3.1.12 MacroOnLoaded: Process macro once when page loaded

3.1.13 MacroOnShow: Process macro when show this page

3.1.14 Prebuilt: Page must be prebuilt then can be display. If the value is True= the page will be built up when

Date	2011/10/13	Page	32/ 89
-------------	------------	-------------	--------



Subject	Open HMI Page Editor Manual	Doc. No.	
----------------	-----------------------------	-----------------	--

boots up. If false= the page will be built before it in use. IF all the pages are set true as prebuild at boots up, it takes longer time to boot up controller.

3.1.15 Width: page width

Subject	Open HMI Page Editor Manual	Doc. No.	
----------------	-----------------------------	-----------------	--

3.2 TohPanel

There are 23 properties of panel, details are as below :

3.2.1 Align : Component alignment, Component can follow this property to align on the upper layer automatically, value :

alNone : Not align automatically

alTop : Align to top component's top edge automatically

alBottom : Align to top component's bottom edge automatically

alLeft : Align to top component's left edge automatically

alRight : Align to top component's right edge automatically

alClient : Align on the top component with maximum layout.

3.2.2 Alignment : The way for text font to align horizontally, value, value :

taLeftJustify : Text font aligns to the left side

taRightJustify : Text font aligns to the right side

taCenter : Text font aligns to the center

3.2.3 BevellInner) : Component's inside bevel style, value :

bvNone : Not use (flat)


bvLowered : Lower


bvRaised : Raised

3.2.4 BevelOuter : Component's outside bevel style,, value : bvNone, bvLowered, bvRaised, please refer to3.2.3.

3.2.5 BevelWidth : Component's inside/outside bevel width.

3.2.6 Border Style : Components border style, value :

bsNone : Not use 

bsSingle : Draw a black line at the component's outside edge 

3.2.7 Border Width : Border width of inside/outside distance

3.2.8 Caption : Component's capital text

3.2.9 Color : Component's background color, please refer to color property of the setting method.

3.2.10 Font Bold : Component use bold font, value : True, False.

3.2.11 Font Color : Focus is not on component's font color; please refer to color property of the setting method.

3.2.12 Font Height : Font heights, value : fh16, fh20, fh32, please refer to 3.1.5.

3.2.13 Height : Component's height.

Date	2011/10/13	Page	34/ 89
-------------	------------	-------------	--------



Subject	Open HMI Page Editor Manual	Doc. No.	
----------------	------------------------------------	-----------------	--

3.2.14 Hide Condition : Component's hidden condition, value :

ccNone : Not hide

ccGreater : If inner saving value is bigger than reference value, hide component.

ccLess : If inner saving value is smaller than reference value, hide component.

ccEqual : If inner saving value is the same to the reference value, hide component.

ccUnequal : If inner saving value is not the same to the reference value, hide component.

3.2.15 HideRefBit : Component hides the reference bit value of inner variable.

3.2.16 HideRefNo : Component hides the corresponding number of inner saving variable.

3.2.17 HideRefType : Component hides the corresponding situation of inner saving variable, value, value :

rtR : inner saving variable ◦

rtParameter : Parameter

rtI : Input signal

rtO : Output signal

rtC : Control signal

rtS : Situation signal

rtA : Aid signal

rtTimer : Timer

rtCounter : Counter

3.2.18 HideRefValue : Component hides the reference value

3.2.19 Left : Left side of component

3.2.20 Name : Component name, Cannot have same name at same page, but acceptable for different page.

3.2.21 Parent Color : Use upper component' s background color to be its background color,, value : True, False ◦

3.2.22 Parent Font : Use upper component' s font to be its font. Here includes : Bold font, font color, font height, value : True, False

3.2.23 The top location of component.

3.2.24 Width : Component's width.

Date	2011/10/13	Page	35/ 89
-------------	------------	-------------	--------

Subject	Open HMI Page Editor Manual	Doc. No.	
----------------	-----------------------------	-----------------	--

3.3 TohLabel

There are 24 properties of label, details are as below :

3.3.1 Align : Component alignment, Component can follow this property to align on the upper layer automatically, value : alNone, alTop, alBottom, alLeft, alRight, alClient, please refer to 3.2.1.

3.3.2 Alignment : The way for text font to align horizontally, value : taLeftJustify, taRightJustify, taCenter, please refer to 3.2.2.

3.3.3 Auto Size : When the file property changes, it will adjust the component's size automatically to show the picture completely, value : True, False.

3.3.4 BorderStyle : Bolder style, value :

bsNone : **bsNone**

bsSingle : **bsSingle**

bsDouble : **bsDouble**

bsRaisedPanel : **bsRaisedPanel**

bsSunkenPanel : **bsSunkenPanel**

bsRaised3d : **bsRaised3d**

bsSunken3d : **bsSunken3d**

bsEtched : **bsEtched**

bsEmbossed : **bsEmbossed**

3.3.5 Caption : Component's capital text.

3.3.6 Color : Component's background color, please refer to color property of the setting method.

3.3.7 FontBold : Component use bold font, value : True, False

3.3.8 FontColor : Focus is not on component's font color; please refer to color property of the setting method.

3.3.9 FontHeight : Font's heights, value : fh16, fh20, fh32, please refer to 3.1.5.

3.3.10 Height : Component's height.

Date	2011/10/13	Page	36/ 89
-------------	------------	-------------	--------



Subject	Open HMI Page Editor Manual	Doc. No.	
----------------	------------------------------------	-----------------	--

- 3.3.11 Hide Condition : Component's hidden condition, value : ccNone, ccGreater, ccLess, ccEqual, ccUnequal, please refer to 3.2.14.HideRefNo : Component hides the corresponding number of inner saving variable.
- 3.3.12 HideRefBit : Component hides the reference bit of inner variable number.
- 3.3.13 HideRefNo : Component hides the corresponding number of inner saving variable.
- 3.3.14 HideRefType : Component hides the corresponding situation of inner saving variable, value : rtR, rtParameter, rtl, rtO, rtC, rtS, rtA, rtTimer, rtCounter, please refer to 3.2.17.
- 3.3.15 HideRefValue : Component hides the reference value
- 3.3.16 Layout : Layout of text, value :
- tlTop : Align to top.
- tlCenter : Align to center.
- tlBottom : Align to bottom.
- 3.3.17 Left : Component's left side location.
- 3.3.18 Name : The name of component, the name can not repeat in the same page, different page is ok.
- 3.3.19 ParentColor : Use upper component' s background color to be its background color, value : True, False.
- 3.3.20 ParentFont : Use upper component' s font to be its font. Here includes : bold, font color, font height and so on, value : True, False.
- 3.3.21 Top : The top location of component.
- 3.3.22 Transparent : Background transparency, value : True, False.
- 3.3.23 Width : Component's width.
- 3.3.24 WordWrap : When the text length is larger than component width, and the auto size is False, text will change line directly, value : True, False.



Subject	Open HMI Page Editor Manual	Doc. No.	
----------------	-----------------------------	-----------------	--

3.4 TohSettingLabel

There are 39 properties of setting, details are as below :

- 3.4.1 Align : Component alignment, Component can follow this property to align on the upper layer automatically, value : alNone, alTop, alBottom, alLeft, alRight, alClient, please refer to 3.2.1.
- 3.4.2 Alignment : The way for text font to align horizontally, value : taLeftJustify, taRightJustify, taCenter, please refer to 3.2.2.
- 3.4.3 Authority : Input authority, user's level must be higher than this setting.
- 3.4.4 Auto Size : When the file property changes, it will adjust the component's size automatically to show the picture completely, value : True, False
- 3.4.5 Border Style : Component border styles, value : bsNone, bsSingle, bsDouble, bsRaisedPanel, bsSunkenPanel, bsRaised3d, bsSunken3d, bsEtched, bsEmbossed, please refer to 3.3.4.
- 3.4.6 Caption : Component's capital text.
- 3.4.7 DisableColor : Components background color when disabled. Refer to color property guide.
- 3.4.8 DisableCondition : Disable condition, when component is disable, user cannot input data, value :
 - ccNone : Disable function no use
 - ccGreater : When the inner saving value is bigger than reference value, component disables.
 - ccLess : When the inner saving value is smaller than reference value, component disables.
 - ccEqual : When the inner saving value is the same to the reference value, component disables.
 - ccUnequal : When the inner saving value is not the same to the reference value, component disables.
- 3.4.9 DisableFontColor) : Components Font color when disabled. Refer to color property guide
- 3.4.10 DisableRefBit : Components reference bit when disabled.
- 3.4.11 DisableRefNo : If you want to set component disable, please refer to inner saving variable number
- 3.4.12 DisableRefType : Component disable-inner saving variable type, value : rtR, rtParameter, rtl, rtO, rtC, rtS, rtA, rtTimer, rtCounter, please refer to 3.2.17.
- 3.4.13 DisableRefValue : Set component disable value.
- 3.4.14 FocusColor : Focus is on the component's background color; please refer to color property of the setting method.
- 3.4.15 FocusFontColor : Focus is on the component's font color; please refer to color property of the setting method.
- 3.4.16 Font Bold : Component use bold font, value : True, False.
- 3.4.17 Font Color : Focus is not on component's font color; please refer to color property of the setting method.
- 3.4.18 Font Height : Font's heights, value : fh16, fh20, fh32, please refer to 3.1.5.
- 3.4.19 Height : Component's height

Date	2011/10/13	Page	38/ 89
-------------	------------	-------------	--------



Subject	Open HMI Page Editor Manual	Doc. No.	
----------------	------------------------------------	-----------------	--

- 3.4.20 Hide Condition : Component's hidden condition, value : ccNone, ccGreater, ccLess, ccEqual, ccUnequal, please refer to 3.2.14.
- 3.4.21 HideRefBit : Component hides the reference bit of inner saving variable number.
- 3.4.22 HideRefNo : Component hides the corresponding number of inner saving variable.
- 3.4.23 HideRefType : Component hides the corresponding situation of inner saving variable, value : rtR, rtParameter, rtl, rtO, rtC, rtS, rtA, rtTimer, rtCounter, please refer to 3.2.16
- 3.4.24 HideRefValue : Component hides the reference value
- 3.4.25 Layout : Layout of text, value : tlTop, tlCenter, tlBottom, please refer to 3.3.16
- 3.4.26 Left : Component's left side location.
- 3.4.27 MacroOnEnter : When Component enters focus, process this macro.
- 3.4.28 MacroOnExit) : When Component exits focus, process this macro.
- 3.4.29 MacroOnInputted) : When user input complete, process this macro.
- 3.4.30 Name : The name of component, the name cannot repeat in the same page, different page is ok.
- 3.4.31 Normal Color : Focus is not on the component's background color; please refer to color property of the setting method.
- 3.4.32 RBit : The bit of variable number for input to Component.
- 3.4.33 RNo : Input inner saving variable starting number.
- 3.4.34 RPrecision : Display decimal places, default : -2 (2 digits after the decimal point)
- 3.4.35 Tag : Component's Tag vaule, Integer is acceptable.
- 3.4.36 Top : The top location of component.
- 3.4.37 Transparent : Background transparency, value : True, False.
- 3.4.38 Width : Component's width.
- 3.4.39 Word-wrap : When the text length is larger than component width, and the auto size is False, text will change line directly, value : True, False.



Subject	Open HMI Page Editor Manual	Doc. No.	
----------------	-----------------------------	-----------------	--

3.5 TohRangeSettingLabel

There are 44 properties of text setting, details are as below :

- 3.5.1 Align : Component alignment, Component can follow this property to align on the upper layer automatically, value : alNone, alTop, alBottom, alLeft, alRight, alClient, please refer to 3.2.1.
- 3.5.2 Alignment : The way for text font to align horizontally, value : taLeftJustify, taRightJustify, taCenter, please refer to 3.2.2.
- 3.5.3 Authority : Input authority, user's level must be higher than this setting.
- 3.5.4 AutoSize : When the file property changes, it will adjust the component's size automatically to show the picture completely, value : True, False.
- 3.5.5 BorderStyle : Component border style, value : bsNone, bsSingle, bsDouble, bsRaisedPanel, bsSunkenPanel, bsRaised3d, bsSunken3d, bsEtched, bsEmbossed, please refer to 3.3.4
- 3.5.6 Caption : Component's capital text.
- 3.5.7 DisableColor : Components disabled background color, refer to color property setup.
- 3.5.8 DisableCondition : Disable condition, when component is disabling, user cannot input data, value : ccNone, ccGreater, ccLess, ccEqual, ccUnequal, please refer to 3.4.8.
- 3.5.9 DisableFontColor : Font color when component disabled, refer to color property setup.
- 3.5.10 DisableRefBit : Reference bit of inner variable value when component disabled.
- 3.5.11 DisableRefNo : If you want to set component disable, please refer to inner saving variable number.
- 3.5.12 DisableRefType : Component disable-inner saving variable type, value : rtR, rtParameter, rtl, rtO, rtC, rtS, rtA, rtTimer, rtCounter, please refer to 3.2.16.
- 3.5.13 DisableRefValue : Reference value when component disabled.
- 3.5.14 FocusColor : Focus is on the component's background color, please refer to color property of the setting method.
- 3.5.15 FocusFontColor : Focus is on the component's font color, please refer to color property of the setting method.
- 3.5.16 FontBold : Component use bold font, value : True, False.
- 3.5.17 FontColor : Focus is not on component's font color, please refer to color property of the setting method.
- 3.5.18 FontHeight : Font's heights, value : fh16, fh20, fh32, please refer to 3.1.5.
- 3.5.19 Height : Component's height.
- 3.5.20 HideCondition : Component's hidden condition, value : ccNone, ccGreater, ccLess, ccEqual, ccUnequal, please refer to 3.2.14.
- 3.5.21 HideRefBit : Reference bit of inner variable value when component disabled.
- 3.5.22 HideRefNo : Component hides the corresponding number of inner saving variable.

Date	2011/10/13	Page	40/ 89
-------------	------------	-------------	--------



Subject	Open HMI Page Editor Manual	Doc. No.	
----------------	------------------------------------	-----------------	--

- 3.5.23 HideRefType : Component hides the corresponding situation of inner saving variable, value : rtR, rtParameter, rtl, rtO, rtC, rtS, rtA, rtTimer, rtCounter, please refer to 3.2.16.
- 3.5.24 HideRefValue : Component hides the reference value.
- 3.5.25 Hint : When component enter focus, will show hint at input hint area.
- 3.5.26 Layout : Layout of text, value : tlTop, tlCenter, tlBottom, please refer to 3.3.16.
- 3.5.27 Left : Component's left side location.
- 3.5.28 MacroOnEnter : When component enter focus, process this macro.
- 3.5.29 MacroOnExit : When component exit focus, process this macro.
- 3.5.30 MacroOnInputted : When user inputted, process this macro.
- 3.5.31 Name : The name of component, the name cannot repeat in the same page, different page is ok.
- 3.5.32 NormalColor : Focus is not on the component's background color, please refer to color property of the setting method.
- 3.5.33 RefBit : The bit of component input reference number.
- 3.5.34 RefMax : Max value.
- 3.5.35 RefMin : Minima value.
- 3.5.36 RefNo : The reference number that input by component.
- 3.5.37 RefPrecision : Number of decimal places displayed. Default : -2 = Two decimal ◦
- 3.5.38 RefType : componet reference type:
rrtR : inner variable signal.
rrtA : assistance signal.
- 3.5.39 RefUnit : Reference unit, default : -3 (-3 power of 10) ◦
- 3.5.40 Tag : Component tag value, Integer is acceptable.
- 3.5.41 Top : The top location of component
- 3.5.42 Transparent : Background transparency, value : True, False.
- 3.5.43 Width : Component's width.
- 3.5.44 WordWrap : When the text length is larger than component width, and the auto size is False, text will change line directly, value : True, False.

Date	2011/10/13	Page	41/ 89
-------------	------------	-------------	--------



Subject	Open HMI Page Editor Manual	Doc. No.	
----------------	-----------------------------	-----------------	--

3.6 TohStateTextSettingLabel

48 properties, details as following:

3.6.1 Align : Component alignment, Component can follow this property to align on the upper layer automatically, value : alNone, alTop, alBottom, alLeft, alRight, alClient, please refer to 3.2.1.

3.6.2 Alignment : The way for text font to align horizontally, value : taLeftJustify, taRightJustify, taCenter, please refer to 3.2.2.

3.6.3 Authority : Input authority, user's level must be higher than this setting.

3.6.4 AutoSize : When the file property changes, it will adjust the component's size automatically to show the picture completely, value : True, False.

3.6.5 BorderStyle : Component border styles, value : bsNone, bsSingle, bsDouble, bsRaisedPanel, bsSunkenPanel, bsRaised3d, bsSunken3d, bsEtched, bsEmbossed, please refer to 3.3.4.

3.6.6 Caption : Component title.

3.6.7 DisableColor : Components disabled background color, refer to color property setup.

3.6.8 DisableCondition : Disable condition, when component is disable, user cannot input data, value : ccNone : Disable function no use

ccGreater : When the inner saving value is bigger than reference value, component disables.

ccLess : When the inner saving value is smaller than reference value, component disables.

ccEqual : When the inner saving value is the same to the reference value, component disables.

ccUnequal : When the inner saving value is not the same to the reference value, component disables.

3.6.9 DisableFontColor : Font color when component disabled, refer to color property setup.

3.6.10 DisableRefBit : Reference bit of inner variable value when component disabled.

3.6.11 DisableRefNo : If you want to set component disable, please refer to inner saving variable number.

3.6.12 DisableRefType : Component disable-inner saving variable type, value : rtR, rtParameter, rtl, rtO, rtC, rtS, rtA, rtTimer, rtCounter, please refer to 3.2.16

3.6.13 DisableRefValue : Reference value when component disabled.

3.6.14 FocusColor : Focus is on the component's background color, please refer to color property of the setting method.

3.6.15 FocusFontColor : Focus is on the component's font color, please refer to color property of the setting method.

3.6.16 FontBold : Component use bold font, value : True, False.

3.6.17 FontColor : Focus is not on component's font color, please refer to color property of the setting method.

3.6.18 FontHeight : Font's heights, value : fh16, fh20, fh32, please refer to 3.1.5

Date	2011/10/13	Page	42/ 89
-------------	------------	-------------	--------



Subject	Open HMI Page Editor Manual	Doc. No.	
----------------	------------------------------------	-----------------	--

- 3.6.19 Height : Component' s height.
- 3.6.20 HideCondition : Component' s hidden condition, value : ccNone, ccGreater, ccLess, ccEqual, ccUnequal, please refer to 3.2.14.
- 3.6.21 HideRefBit : Component hides the reference bit of inner saving variable number.
- 3.6.22 HideRefNo : Component hides the corresponding number of inner saving variable.
- 3.6.23 HideRefType : Component hides the corresponding situation of inner saving variable, value : rtR, rtParameter, rtl, rtO, rtC, rtS, rtA, rtTimer, rtCounter, please refer to 3.2.16.
- 3.6.24 HideRefValue : The reference value when componet hides.
- 3.6.25 Layout : Layout of text, value : tlTop, tlCenter, tlBottom, please refer to 3.3.16.
- 3.6.26 Left : Component' s left side
- 3.6.27 MacroOnEnter : When component enter focus, process this macro.
- 3.6.28 MacroOnExit : When component exit focus, process this macro.
- 3.6.29 MacroOnInputted : When user inputted, process this macro.
- 3.6.30 Name : The name of component, the name cannot repeat in the same page, different page is ok.
- 3.6.31 NormalColor : Focus is not on the component' s background color, please refer to color property of the setting method.
- 3.6.32 RNo : Input inner saving variable starting number.
- 3.6.33 State0String : Display string when Inner variable =0
- 3.6.34 State1String : Display string when Inner variable =1
- 3.6.35 State2String : Display string when Inner variable =2
- 3.6.36 State3String : Display string when Inner variable =3
- 3.6.37 State4String : Display string when Inner variable =4
- 3.6.38 State5String : Display string when Inner variable =5
- 3.6.39 State6String : Display string when Inner variable =6
- 3.6.40 State7String : Display string when Inner variable =7
- 3.6.41 State8String : Display string when Inner variable =8
- 3.6.42 State9String : Display string when Inner variable =9
- 3.6.43 StringTable: It can shows different inner variable string chart, if selected string chart, it will skip the state string1~9.
- 3.6.44 Tag : Component tag value, Integer is acceptable.
- 3.6.45 Top : The top location of component
- 3.6.46 Transparent : Background transparency, value : True, False.
- 3.6.47 Width : Component' s width.
- 3.6.48 WordWrap : When the text length is larger than component width, and the auto size is False, text will

Date	2011/10/13	Page	43/ 89
-------------	------------	-------------	--------



Subject	Open HMI Page Editor Manual	Doc. No.	
----------------	-----------------------------	-----------------	--

change line directly, value : True, False.



Subject	Open HMI Page Editor Manual	Doc. No.	
----------------	-----------------------------	-----------------	--

3.7 TohDisplayLabel

29 properties, details as following:

- 3.7.1 Align : Component alignment, Component can follow this property to align on the upper layer automatically, value : alNone, alTop, alBottom, alLeft, alRight, alClient, please refer to 3.2.1.
- 3.7.2 Alignment : The way for text font to align horizontally, value : taLeftJustify, taRightJustify, taCenter, please refer to 3.2.2.
- 3.7.3 AutoSize : When the file property changes, it will adjust the component' s size automatically to show the picture completely, value : True, False.
- 3.7.4 BorderStyle : Component border styles, value : bsNone, bsSingle, bsDouble, bsRaisedPanel, bsSunkenPanel, bsRaised3d, bsSunken3d, bsEtched, bsEmbossed, please refer to 3.3.4.
- 3.7.5 Caption : Component title.
- 3.7.6 Color : Component' s background color, please refer to color property of the setting method.
- 3.7.7 FontBold : Component use bold font, value : True, False.
- 3.7.8 FontColor : Focus is not on component' s font color, please refer to color property of the setting method.
- 3.7.9 FontHeight : Font' s heights, value : fh16, fh20, fh32, please refer to 3.1.5.
- 3.7.10 Height : Component' s height.
- 3.7.11 HideCondition : Component' s hidden condition, value : ccNone, ccGreater, ccLess, ccEqual, ccUnequal, please refer to 3.2.14.
- 3.7.12 HideRefBit : Component hides the reference bit of inner saving variable number.
- 3.7.13 HideRefNo : Component hides the corresponding number of inner saving variable.
- 3.7.14 HideRefType : Component hides the corresponding situation of inner saving variable, value : rtR, rtParameter, rtl, rtO, rtC, rtS, rtA, rtTimer, rtCounter, please refer to 3.2.16.
- 3.7.15 HideRefValue : The reference value when componet hides.
- 3.7.16 Layout : Layout of text, value : tlTop, tlCenter, tlBottom, please refer to 3.3.16.
- 3.7.17 Left : Component' s left side
- 3.7.18 Name : The name of component, the name cannot repeat in the same page, different page is ok.
- 3.7.19 ParentColor : Use upper component' s background color to be its background color, value : True, False.
- 3.7.20 ParentFont : Use upper component' s font to be its font. Here includes : bold, font color, font height and so on, value : True, False.
- 3.7.21 RefBit : The bit of component input reference number.
- 3.7.22 RefNo : The reference number of inner variable value.
- 3.7.23 RefPrecision : Number of decimal places displayed. Default : -2 = Two decimal

Date	2011/10/13	Page	45/ 89
-------------	------------	-------------	--------



Subject	Open HMI Page Editor Manual	Doc. No.	
----------------	-----------------------------	-----------------	--

3.7.24 RefType: Component reference type; available value:rtR,rtParameter,rtI,rtO,rtC,rtS,rtA,rtTimer,rtCounter.

Details refer to 3.2.17.

3.7.25 RefUnit : Reference unit, default : -3 (-3 power of 10) °

3.7.26 Top : The top location of component

3.7.27 Transparent : Background transparency, value : True, False.

3.7.28 Width : Component' s width.

3.7.29 WordWrap : When the text length is larger than component width, and the auto size is False, text will change line directly, value : True, False.



Subject	Open HMI Page Editor Manual	Doc. No.	
----------------	-----------------------------	-----------------	--

3.8 TohStateTextDisplayLabel

56 properties, details as following:

- 3.8.1 Align : Component alignment, Component can follow this property to align on the upper layer automatically, value : alNone, alTop, alBottom, alLeft, alRight, alClient, please refer to 3.2.1.
- 3.8.2 Alignment : The way for text font to align horizontally, value : taLeftJustify, taRightJustify, taCenter, please refer to 3.2.2.
- 3.8.3 AutoSize : When the file property changes, it will adjust the component' s size automatically to show the picture completely, value : True, False.
- 3.8.4 BorderStyle : Component border styles, value : bsNone, bsSingle, bsDouble, bsRaisedPanel, bsSunkenPanel, bsRaised3d, bsSunken3d, bsEtched, bsEmbossed, please refer to 3.3.4.
- 3.8.5 Caption : Component title.
- 3.8.6 Color : Component' s background color, please refer to color property of the setting method.
- 3.8.7 FontBold : Component use bold font, value : True, False.
- 3.8.8 FontColor : Focus is not on component' s font color, please refer to color property of the setting method.
- 3.8.9 FontHeight : Font' s heights, value : fh16, fh20, fh32, please refer to 3.1.5.
- 3.8.10 Height : Component' s height.
- 3.8.11 HideCondition : Component' s hidden condition, value : ccNone, ccGreater, ccLess, ccEqual, ccUnequal, please refer to 3.2.14.
- 3.8.12 HideRefBit : Component hides the reference bit of inner saving variable number.
- 3.8.13 HideRefNo : Component hides the corresponding number of inner saving variable.
- 3.8.14 HideRefType : Component hides the corresponding situation of inner saving variable, value : rtR, rtParameter, rtl, rtO, rtC, rtS, rtA, rtTimer, rtCounter, please refer to 3.2.16.
- 3.8.15 HideRefValue : The reference value when componet hides.
- 3.8.16 Layout : Layout of text, value : tlTop, tlCenter, tlBottom, please refer to 3.3.16.
- 3.8.17 Left : Component' s left side
- 3.8.18 Name : The name of component, the name cannot repeat in the same page, different page is ok.
- 3.8.19 ParentColor : Use upper component' s background color to be its background color, value : True, False.
- 3.8.20 ParentFont : Use upper component' s font to be its font. Here includes : bold, font color, font height and so on, value : True, False.
- 3.8.21 RNo : The inner variable numbers that component display.
- 3.8.22 State0Color: Background color when inner variable = 0
- 3.8.23 State0FontColor : Font color when inner variable = 0

Date	2011/10/13	Page	47/ 89
-------------	------------	-------------	--------



Subject	Open HMI Page Editor Manual	Doc. No.	
----------------	------------------------------------	-----------------	--

- 3.8.24 State0String : Display string when Inner variable =0
- 3.8.25 State1Color: Background color when inner variable = 1
- 3.8.26 State1FontColor : Font color when inner variable = 1
- 3.8.27 State1String : Display string when Inner variable =1
- 3.8.28 State2Color: Background color when inner variable = 2
- 3.8.29 State2FontColor : Font color when inner variable = 2
- 3.8.30 State2String : Display string when Inner variable =2
- 3.8.31 State3Color: Background color when inner variable = 3
- 3.8.32 State3FontColor : Font color when inner variable = 3
- 3.8.33 State3String : Display string when Inner variable =3
- 3.8.34 State4Color: Background color when inner variable = 4
- 3.8.35 State4FontColor : Font color when inner variable = 4
- 3.8.36 State4String : Display string when Inner variable =4
- 3.8.37 State5Color: Background color when inner variable = 5
- 3.8.38 State5FontColor : Font color when inner variable = 5
- 3.8.39 State5String : Display string when Inner variable =5
- 3.8.40 State6Color: Background color when inner variable = 6
- 3.8.41 State6FontColor : Font color when inner variable = 6
- 3.8.42 State6String : Display string when Inner variable =6
- 3.8.43 State7Color: Background color when inner variable = 7
- 3.8.44 State7FontColor : Font color when inner variable = 7
- 3.8.45 State7String : Display string when Inner variable =7
- 3.8.46 State8Color: Background color when inner variable = 8
- 3.8.47 State8FontColor : Font color when inner variable = 8
- 3.8.48 State8String : Display string when Inner variable =8
- 3.8.49 State9Color: Background color when inner variable = 9
- 3.8.50 State9FontColor : Font color when inner variable = 9
- 3.8.51 State9String : Display string when Inner variable =9
- 3.8.52 StringTable: It can shows different inner variable string chart, if selected string chart, it will skip the state string1~9.
- 3.8.53 Top : The top location of component
- 3.8.54 Transparent : Background transparency, value : True, False.
- 3.8.55 Width : Component' s width.
- 3.8.56 WordWrap : When the text length is larger than component width, and the auto size is False, text will

Date	2011/10/13	Page	48/ 89
-------------	------------	-------------	--------



Subject	Open HMI Page Editor Manual	Doc. No.	
----------------	-----------------------------	-----------------	--

change line directly, value : True, False.

3.9 TohImage

16 properties, details as following:

3.9.1 Align : Component alignment, Component can follow this property to align on the upper layer automatically, value : alNone, alTop, alBottom, alLeft, alRight, alClient, please refer to 3.2.1.

3.9.2 AutoSize : When the file property changes, it will adjust the component' s size automatically to show the picture completely, value : True, False.

3.9.3 Center : Align to the center, value : True, False

3.9.4 FileName : File name, you need to put the picture into project directory firstly, then it will show on the page, supporting files : ico, xpm, png, bmp, ddw, jpg.

3.9.5 Height : Component' s height.

3.9.6 HideCondition : Component' s hidden condition, value : ccNone, ccGreater, ccLess, ccEqual, ccUnequal, please refer to 3.2.14.

3.9.7 HideRefBit : Component hides the reference bit of inner saving variable number.

3.9.8 HideRefNo : Component hides the corresponding number of inner saving variable.

3.9.9 HideRefType : Component hides the corresponding situation of inner saving variable, value : rtR, rtParameter, rtl, rtO, rtC, rtS, rtA, rtTimer, rtCounter, please refer to 3.2.16.

3.9.10 HideRefValue : The reference value when componet hides.

3.9.11 Left : Component' s left side

3.9.12 Name : The name of component, the name cannot repeat in the same page, different page is ok.

3.9.13 Stretch : Auto zoom original picture to make it fulfill the total component, value : True, False.

3.9.14 Top : The top location of component

3.9.15 Transparent : Background transparency, value : True, False.

3.9.16 Width : Component' s width.

Date	2011/10/13	Page	49/ 89
-------------	------------	-------------	--------

Subject	Open HMI Page Editor Manual	Doc. No.	
----------------	-----------------------------	-----------------	--

3.10 TohLedRectangle

Rectangle led has 31 properties, details as following:

3.10.1 Active : ON, value : True, False

3.10.2 ActiveColor : Color of the light, please refer to color property of the setting method.

3.10.3 ActiveCondition : Lighting condition, value :

ccNone : Not active.

ccGreater : If the default is bigger than the reference number, then trigger component.

ccLess : If the default is smaller than the reference number, then trigger component.

ccEqual : If the default is the same to the reference number, then trigger component.

ccUnequal : If the default is not the same to the reference number, then trigger component.

3.10.4 ActiveRefBit : Lighting's corresponding bit number of inner saving variable.

3.10.5 ActiveRefNo : Lighting' s corresponding number of inner saving variable


3.10.6 ActiveRefType : Lighting' s corresponding situation of inner saving variable, value : rtR, rtParameter, rtl, rtO, rtC, rtS, rtA, rtTimer, rtCounter, please refer to 3.2.17.


3.10.7 ActiveRefValue : Lighting' s corresponding number

3.10.8 AutoInactiveColor : According to 『active color』 property to produce lighting-out color automatically, value : True, False

3.10.9 BevelStyle : The bevel style of light, value :

ibsNone : Not in use 

ibsLowered : Low down 

ibsRaised : Raised 

3.10.10 CenterLabelAlignment : Title text alignment, value :

iahLeft : Align to the left

iahRight : Align to the right

iahCenter : Align to the center

3.10.11 CenterLabelEndsMargin : Text indents distance.

3.10.12 CenterLabelFontActiveColor : Text color when lighting, please refer to color property of the setting method.

3.10.13 CenterLabelFontBold : Use bold text, value : True, False ◦

3.10.14 CenterLabelFontHeight : Text height, value : fh16, fh20, fh32, please refer to 3.1.5.

Date	2011/10/13	Page	50/ 89
-------------	------------	-------------	--------



Subject	Open HMI Page Editor Manual	Doc. No.	
----------------	------------------------------------	-----------------	--

- 3.10.15 CenterLabelFontInactiveColor : Text color when lighting-out, please refer to color property of the setting method.
- 3.10.16 CenterLabelText : The center label text of the component.
- 3.10.17 CenterLabelWordWrap : When the length of label is longer than the width of component, the word will change line automatically, value : True, False
- 3.10.18 Height : Component' s height.
- 3.10.19 HideCondition : Component' s hidden condition, value : ccNone, ccGreater, ccLess, ccEqual, ccUnequal, please refer to 3.2.14.
- 3.10.20 HideRefBit : Component hides the reference bit of inner saving variable number.
- 3.10.21 HideRefNo : Component hides the corresponding number of inner saving variable.
- 3.10.22 HideRefType : Component hides the corresponding situation of inner saving variable, value : rtR, rtParameter, rtl, rtO, rtC, rtS, rtA, rtTimer, rtCounter, please refer to 3.2.17
- 3.10.23 HideRefValue : The reference value when componet hides.
- 3.10.24 InactiveColor : Lighting-out color, when not using 『produce inactive color automatically』, the property will be effective, please refer to color property of the setting method.
- 3.10.25 Left : Component' s left side
- 3.10.26 MacroOnActive : When lights up, process this macro.
- 3.10.27 MacroOnInactive : When lights off, process this macro. MacroOnInactive : When lights off, process this macro.
- 3.10.28 Name : The name of component, the name cannot repeat in the same page, different page is ok.
- 3.10.29 ParentFont : Use upper component' s font to be its font. Here includes : bold, font color, font height and so on, value : True, False.
- 3.10.30 Top : The top location of component
- 3.10.31 Width : Component' s width.

Subject	Open HMI Page Editor Manual	Doc. No.	
----------------	-----------------------------	-----------------	--

3.11 TohLedRound

Round LED has 24 properties, details as following.

3.11.1 Active : ON, value : True, False

3.11.2 ActiveColor : Color of the light, please refer to color property of the setting method.

3.11.3 ActiveCondition : Lighting condition, value : ccNone \ ccGreater \ ccLess \ ccEqual \ ccUnequal, refer to 3.19.3.

3.11.4 ActiveRefBit : Lighting's corresponding bit number of inner saving variable.

3.11.5 ActiveRefNo : Lighting' s corresponding number of inner saving variable

3.11.6 ActiveRefType : Lighting' s corresponding situation of inner saving variable, value : rtR, rtParameter, rtl, rtO, rtC, rtS, rtA, rtTimer, rtCounter, please refer to 3.2.17.

3.11.7 ActiveRefValue : Lighting' s corresponding number

3.11.8 AutoInactiveColor : According to 『active color』 property to produce lighting-out color automatically, value : True, False

3.11.9 BackGroundColor : Component's background color, please refer to color property of the setting method.

3.11.10 BevelStyle : The bevel style of light, value : ibsNone \ ibsLowered \ ibsRaised, refer to 3.19.8.

3.11.11 Height : Component' s height.

3.11.12 HideCondition : Component' s hidden condition, value : ccNone, ccGreater, ccLess, ccEqual, ccUnequal, please refer to 3.2.14.

3.11.13 HideRefBit : Component hides the reference bit of inner saving variable number.

3.11.14 HideRefNo : Component hides the corresponding number of inner saving variable.

3.11.15 HideRefType : Component hides the corresponding situation of inner saving variable, value : rtR, rtParameter, rtl, rtO, rtC, rtS, rtA, rtTimer, rtCounter, please refer to 3.2.17.

3.11.16 HideRefValue : The reference value when componet hides.

3.11.17 InactiveColor : Lighting-out color, when not using 『produce inactive color automatically』, the property will be effective, please refer to color property of the setting method.

3.11.18 Left : Component' s left side

3.11.19 MacroOnActive : When lights up, process this macro.

3.11.20 MacroOnInactive : When lights off, process this macro.

3.11.21 Name : The name of component, the name cannot repeat in the same page, different page is ok.

3.11.22 ShowReflection : Show anti-light on round light, value : True, False ◦

3.11.23 Top : The top location of component

3.11.24 Width : Component' s width.

Date	2011/10/13	Page	52/ 89
-------------	------------	-------------	--------

Subject	Open HMI Page Editor Manual	Doc. No.	
----------------	-----------------------------	-----------------	--

3.12 TohLedArrow

Arrow LED has 26 properties, details as following:

- 3.12.1 Active : ON, value : True, False
- 3.12.2 ActiveColor : Color of the light, please refer to color property of the setting method.
- 3.12.3 ActiveCondition : Lighting condition, value : ccNone \ ccGreater \ ccLess \ ccEqual \ ccUnequal, refer to 3.19.3.
- 3.12.4 ActiveRefBit : Lighting's corresponding bit number of inner saving variable.
- 3.12.5 ActiveRefNo : Lighting' s corresponding number of inner saving variable
- 3.12.6 ActiveRefType : Lighting's corresponding situation of inner saving variable, value : rtR, rtParameter, rtl, rtO, rtC, rtS, rtA, rtTimer, rtCounter, please refer to 3.2.17.
- 3.12.7 ActiveRefValue : Lighting' s corresponding number
- 3.12.8 ArrowBodyLength : Arrow Length
- 3.12.9 ArrowHeadSize: Arrow size.
- 3.12.10 AutoInactiveColor : According to 『active color 』 property to produce lighting-out color automatically, value : True, False
- 3.12.11 BackGroundColor : Component' s background color, please refer to color property of the setting method.
- 3.12.12 BevelStyle : The bevel style of light, value : ibsNone \ ibsLowered \ ibsRaised, refer to 3.19.8.
- 3.12.13 Height : Component' s height.
- 3.12.14 HideCondition : Component' s hidden condition, value : ccNone, ccGreater, ccLess, ccEqual, ccUnequal, please refer to 3.2.14.
- 3.12.15 HideRefBit : Component hides the reference bit of inner saving variable number.
- 3.12.16 HideRefNo : Component hides the corresponding number of inner saving variable.
- 3.12.17 HideRefType : Component hides the corresponding situation of inner saving variable, value : rtR, rtParameter, rtl, rtO, rtC, rtS, rtA, rtTimer, rtCounter, please refer to 3.2.16.
- 3.12.18 HideRefValue : The reference value when componet hides.
- 3.12.19 InactiveColor : Lighting-out color, when not using 『produce inactive color automatically 』, the property will be effective, please refer to color property of the setting method.
- 3.12.20 Left : Component' s left side
- 3.12.21 MacroOnActive : When lights up, process this macro.
- 3.12.22 MacroOnInactive : When lights off, process this macro.
- 3.12.23 Name : The name of component, the name cannot repeat in the same page, different page is ok.
- 3.12.24 Style : Arrow style :

Date	2011/10/13	Page	53/ 89
-------------	------------	-------------	--------



Subject	Open HMI Page Editor Manual	Doc. No.	
----------------	-----------------------------	-----------------	--

ilasRight : Arrow to the right side

ilasLeft : Arrow to the left side

ilasUp : Arrow to the upper side

ilasDown : Arrow to the down side

ilasLeftRight : Right/left arrow

ilasUpDown : Upper/down arrow.

3.12.25 Top : The top location of component

3.12.26 Width : Component' s width.

Subject	Open HMI Page Editor Manual	Doc. No.	
----------------	-----------------------------	-----------------	--

3.13 TohThermometer

Thermometer has 37 properties, details as following:

3.13.1 BackGroundColor : Component' s background color, please refer to color property of the setting method.

3.13.2 BevelStyle : The style of component bevel : ibsNone, ibsLowered, ibsRaised, please refer to 3.19.8.

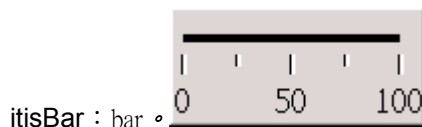
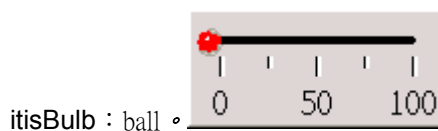
3.13.3 Height : Component' s height.

3.13.4 IndicatorBackGroundColor : The back ground color of indicator, please refer to color property of the setting method.

3.13.5 IndicatorBulbSize : The ball size of indicator.

3.13.6 IndicatorColor : The front color of indicator, please refer to color property of the setting method.

3.13.7 IndicatorStyle : The style of indicator, value :



3.13.8 IndicatorWidth : The width of indicator

3.13.9 Left : Component' s left side

3.13.10 MacroOnTemperatureChange : Process macro when temperature changes.

3.13.11 Name : The name of component, the name cannot repeat in the same page, different page is ok.

3.13.12 OffsetX : The horizontal offset

3.13.13 OffsetY : The vertical offset

3.13.14 Orientation : Thermometer direction, value :

ioVertical : Vertical thermometer

ioHorizontal : Horizontal thermometer

3.13.15 OrientationTickMarks : Scale direction, value :



Subject	Open HMI Page Editor Manual	Doc. No.	
----------------	-----------------------------	-----------------	--

iosBottomRight : The scale location is at the down or right side of indicator.

iosTopLeft : The scale location is at the upper or left side of indicator.

3.13.16 Temperature : Set the temperature of indicator

3.13.17 TemperatureMax : Set the max. temperature of indicator

3.13.18 TemperatureMaxRefRNo : Maximum temperature's corresponding number of inner saving variable

3.13.19 TemperatureMaxRefRUnit : Maximum temperature's corresponding unit of inner saving variable,
default : -3 (10 to the minus third power)

3.13.20 TemperatureMin : The min. temperature of indicator

3.13.21 TemperatureMinRefRNo : Minimum temperature's corresponding number of inner saving variable.

3.13.22 TemperatureMinRefRUnit : Minimum temperature's corresponding unit of inner saving variable,
default : -3 (10 to the minus third power)

3.13.23 TemperatureRefRNo : Current temperature's corresponding number of inner saving variable.

3.13.24 TemperatureRefRUnit : The unit of current inner saving variables, default : -3 (10 to the minus third
power)

3.13.25 TickFontBold : Scale word uses bold, value : True, False ◦

3.13.26 TickFontColor : The color of scale word, please refer to color property of the setting method.

3.13.27 TickFontHeight : The height of scale word, value : fh16, fh20, fh32, please refer to 3.1.5.

3.13.28 TickLabelMargin : The distance between scale and number

3.13.29 TickLabelPrecision : The decimal places of scale(0,1,2,3...)

3.13.30 TickMajorCount : The amount of main scale

3.13.31 TickMajorLength : The length of main scale

3.13.32 TickMajorStyle : The style of main scale, values :

ibsNone : Scale flat

ibsLowered : Scale down

ibsRaised : Scale up

3.13.33 TickMinorCount : The amount of the secondary scale

3.13.34 TickMinorLength : The length of the secondary scale

3.13.35 TickMinorStyle : The style of the secondary scale, values : ibsNone, ibsLowered, ibsRaised, please
refer to 3.22.31.

3.13.36 Top : The top location of component

3.13.37 Width : Component' s width.

Date	2011/10/13	Page	56/ 89
-------------	------------	-------------	--------

Subject	Open HMI Page Editor Manual	Doc. No.	
----------------	-----------------------------	-----------------	--

3.14 TohButton

Button has 34 properties, details as following:

- 3.14.1 Authority : Input permission, user's permission level must higher than this.
- 3.14.2 Caption : Component title, title locates at middle. If there has graph ico, icon at left, text at right. Please refer to Spacing property.
- 3.14.3 Color : Component' s background color, please refer to color property of the setting method.
- 3.14.4 DisableCondition : Disable condition, user cannot input when component disabled, values are: ccNone 、 ccGreater 、 ccLess 、 ccEqual 、 ccUnequal, refer to 3.4.8
- 3.14.5 DisableRefBit : Reference bit of inner variable value when component disabled.
- 3.14.6 DisableRefNo : If you want to set component disable, please refer to inner saving variable number.
- 3.14.7 DisableRefType : Component disable-inner saving variable type, value : rtR, rtParameter, rtl, rtO, rtC, rtS, rtA, rtTimer, rtCounter, please refer to3.2.17.
- 3.14.8 DisableRefValue : Reference value when component disabled.
- 3.14.9 FontBold : Component use bold font, value : True, False.
- 3.14.10 FontColor : Focus is not on component' s font color, please refer to color property of the setting method.
- 3.14.11 FontHeight : Font' s heights, value : fh16, fh20, fh32, please refer to3.1.5.
- 3.14.12 GlyphFileName : Graphic name, put graphic file at project folder, file types:xpm 、 png 、 bmp ◦
- 3.14.13 GlyphsCount : Graphic amount, this component accepts 4 graphs in 1 file. Graphics must be same size and horizontally placed. 1st graph, normal; 2nd, inactive;4th, active; 3rd not use in this component. If there only have 1 graph, all the conditions will have the same graph.
- 3.14.14 Height : Component' s height.
- 3.14.15 HideCondition : Component' s hidden condition, value : ccNone, ccGreater, ccLess, ccEqual, ccUnequal, please refer to 3.2.14.
- 3.14.16 HideRefBit : Component hides the reference bit of inner saving variable number.
- 3.14.17 HideRefNo : Component hides the corresponding number of inner saving variable.
- 3.14.18 HideRefType : Component hides the corresponding situation of inner saving variable, value : rtR, rtParameter, rtl, rtO, rtC, rtS, rtA, rtTimer, rtCounter, please refer to 3.2.16.
- 3.14.19 HideRefValue : The reference value when componet hides.
- 3.14.20 Left : Component' s left side
- 3.14.21 MacroOnButtonClick : Process this macro when button clicked.
- 3.14.22 MacroOnButtonDown : Process this macro when button Down.
- 3.14.23 MacroOnButtonUp : Process this macro when button pressed then released.

Date	2011/10/13	Page	57/ 89
-------------	------------	-------------	--------



Subject	Open HMI Page Editor Manual	Doc. No.	
----------------	-----------------------------	-----------------	--

3.14.24 Name : The name of component, the name cannot repeat in the same page, different page is ok.

3.14.25 OutputNo : The target inner variables value that component will change.

3.14.26 OutputRBit : The bit of inner variable value that the component changes.

3.14.27 OutputTiming : Componet output timing, value are:

botClick : After Click=1

botUpDown : Press down=1, button release=0.

3.14.28 OutputType : Componet's target inner variable value types

otR : inner variable value

otO : output signal

otC : control signal

otS : status signal

otA : assistant signal

3.14.29 ParentColor : Use upper component' s background color to be its background color, value : True, False.

3.14.30 ParentFont : Use upper component' s font to be its font. Here includes : bold, font color, font height and so on, value : True, False.

3.14.31 Spacing: gap between graphic and text, set=-1 will equalize the gap on button.

3.14.32 Top : The top location of component

3.14.33 Transparent : Background transparency, value : True, False.

3.14.34 Width : Component' s width.

Subject	Open HMI Page Editor Manual	Doc. No.	
----------------	-----------------------------	-----------------	--

3.15 TohGroupButton

Group properties have 33 sets, details as following:

- 3.15.1 AllowAllUp : Allowance to deselect the selected buttons, value: True,False.
- 3.15.2 Authority : Input permission, user' s permision level must higher than this.
- 3.15.3 Caption : Component title, title locates at middle. If there has graph ico, icon at left, text at right. Please refer to Spacing property.
- 3.15.4 Color : Component' s background color, please refer to color property of the setting method.
- 3.15.5 DisableCondition : Disable condition, user cannot input when component disabled, values are: ccNone 、 ccGreater 、 ccLess 、 ccEqual 、 ccUnequal, refer to 3.4.8
- 3.15.6 DisableRefBit : Reference bit of inner variable value when component disabled.(DisableRefBit)
- 3.15.7 DisableRefNo : If you want to set component disable, please refer to inner saving variable number.
- 3.15.8 DisableRefType : Component disable-inner saving variable type, value : rtR, rtParameter, rtl, rtO, rtC, rtS, rtA, rtTimer, rtCounter, please refer to3.2.17
- 3.15.9 DisableRefValue : Reference value when component disabled.
- 3.15.10 Down : indicator of button Down, Value: True 、 False ◦
- 3.15.11 FontBold : Component use bold font, value : True, False.
- 3.15.12 FontColor : Focus is not on component' s font color, please refer to color property of the setting method.
- 3.15.13 FontHeight : Font' s heights, value : fh16, fh20, fh32, please refer to3.1.5.
- 3.15.14 GlyphFileName : Graphic name, put graphic file at project folder, file types:xpm 、 png 、 bmp ◦
- 3.15.15 GlyphsCount : Graphic amount, this component accepts 4 graphs in 1 file. Graphics must be same size and horizontally placed. 1st graph, normal; 2nd, inactive;4th, active; 3rd not use in this component. If there only have 1 graph, all the conditions will have the same graph.
- 3.15.16 GroupIndex: same group number will be same group, except 0. Actions will reject each other's when they are in same group, when any one button down, others in same group will up. But buttons are isolated when group number is 0.
- 3.15.17 Height : Component' s height.
- 3.15.18 HideCondition : Component' s hidden condition, value : ccNone, ccGreater, ccLess, ccEqual, ccUnequal, please refer to 3.2.14.
- 3.15.19 HideRefBit : Component hides the reference bit of inner saving variable number.
- 3.15.20 HideRefNo : Component hides the corresponding number of inner saving variable.
- 3.15.21 HideRefType : Component hides the corresponding situation of inner saving variable, value : rtR, rtParameter, rtl, rtO, rtC, rtS, rtA, rtTimer, rtCounter, please refer to 3.2.16.

Date	2011/10/13	Page	59/ 89
-------------	------------	-------------	--------



Subject	Open HMI Page Editor Manual	Doc. No.	
----------------	-----------------------------	-----------------	--

- 3.15.22 HideRefValue : The reference value when componet hides.
- 3.15.23 Left : Component' s left side
- 3.15.24 Name : The name of component, the name cannot repeat in the same page, different page is ok.
- 3.15.25 OutputNo : The target inner variables value that component will change.
- 3.15.26 OutputRBit : The bit of inner variable value that the component changes.
- 3.15.27 OutputType : Component's target inner variable value types
- otR : inner variable value
 - otO : output signal
 - otC : control signal
 - otS : status signal
 - otA : assistant signal
- 3.15.28 ParentColor : Use upper component' s background color to be its background color, value : True, False.
- 3.15.29 ParentFont : Use upper component' s font to be its font. Here includes : bold, font color, font height and so on, value : True, False.
- 3.15.30 Spacing: gap between graphic and text, set=-1 will equalize the gap on button.
- 3.15.31 Top : The top location of component
- 3.15.32 Transparent : Background transparency, value : True, False.
- 3.15.33 Width : Component' s width.

Date	2011/10/13	Page	60/ 89
-------------	------------	-------------	--------



Subject	Open HMI Page Editor Manual	Doc. No.	
----------------	-----------------------------	-----------------	--

3.16 TohTextSettingLabel

Text setting has 38 properties, descriptions as following;

- 3.16.1 Align : Component alignment, Component can follow this property to align on the upper layer automatically, value : alNone, alTop, alBottom, alLeft, alRight, alClient, please refer to 3.2.1.
- 3.16.2 Alignment : The way for text font to align horizontally, value : taLeftJustify, taRightJustify, taCenter, please refer to 3.2.2.
- 3.16.3 Authority : Input permission, user' s permission level must higher than this.
- 3.16.4 AutoSize : When the file property changes, it will adjust the component' s size automatically to show the picture completely, value : True, False.
- 3.16.5 BorderStyle : Component border styles, value : bsNone, bsSingle, bsDouble, bsRaisedPanel, bsSunkenPanel, bsRaised3d, bsSunken3d, bsEtched, bsEmbossed, please refer to 3.3.4.
- 3.16.6 Caption : Component title.
- 3.16.7 DisableColor : Components background color when disabled. Refer to color property guide.
- 3.16.8 DisableCondition : Disable condition, user cannot input when component disabled, values are: ccNone 、 ccGreater 、 ccLess 、 ccEqual 、 ccUnequal, refer to 3.4.8
- 3.16.9 DisableFontColor : Font color when component disabled, refer to color property setup.
- 3.16.10 DisableRefBit : Reference bit of inner variable value when component disabled.
- 3.16.11 DisableRefNo : If you want to set component disable, please refer to inner saving variable number.
- 3.16.12 DisableRefType : Component disable-inner saving variable type, value : rtR, rtParameter, rtl, rtO, rtC, rtS, rtA, rtTimer, rtCounter, please refer to 3.2.17
- 3.16.13 DisableRefValue : Reference value when component disabled.
- 3.16.14 FocusColor : Focus is on the component' s background color, please refer to color property of the setting method.
- 3.16.15 FocusFontColor : Focus is on the component' s font color, please refer to color property of the setting method.
- 3.16.16 FontBold : Component use bold font, value : True, False.
- 3.16.17 FontColor : Focus is not on component' s font color, please refer to color property of the setting method.
- 3.16.18 FontHeight : Font' s heights, value : fh16, fh20, fh32, please refer to 3.1.5.
- 3.16.19 Height : Component' s height.
- 3.16.20 HideCondition : Component' s hidden condition, value : ccNone, ccGreater, ccLess, ccEqual, ccUnequal, please refer to 3.2.14.
- 3.16.21 HideRefBit : Component hides the reference bit of inner saving variable number.

Date	2011/10/13	Page	61/ 89
-------------	------------	-------------	--------



Subject	Open HMI Page Editor Manual	Doc. No.	
----------------	------------------------------------	-----------------	--

- 3.16.22 HideRefNo : Component hides the corresponding number of inner saving variable.
- 3.16.23 HideRefType : Component hides the corresponding situation of inner saving variable, value : rtR, rtParameter, rtl, rtO, rtC, rtS, rtA, rtTimer, rtCounter, please refer to 3.2.16.
- 3.16.24 HideRefValue : The reference value when componet hides.
- 3.16.25 Layout : Layout of text, value : tlTop, tlCenter, tlBottom, please refer to 3.3.16.
- 3.16.26 Left : Component' s left side
- 3.16.27 MacroOnEnter : When component enter focus, process this macro.
- 3.16.28 MacroOnExit : When component exit focus, process this macro.
- 3.16.29 MacroOnInputted : When user inputted, process this macro.
- 3.16.30 Name : The name of component, the name cannot repeat in the same page, different page is ok.
- 3.16.31 NormalColor : Focus is not on the component' s background color, please refer to color property of the setting method.
- 3.16.32 RCount : Inner variable value amount.
- 3.16.33 RNo : Input inner saving variable starting number.
- 3.16.34 Tag : Component tag value, Integer is acceptable.
- 3.16.35 Top : The top location of component
- 3.16.36 Transparent : Background transparency, value : True, False.
- 3.16.37 Width : Component' s width.
- 3.16.38 WordWrap : When the text length is larger than component width, and the auto size is False, text will change line directly, value : True, False.



Subject	Open HMI Page Editor Manual	Doc. No.	
----------------	-----------------------------	-----------------	--

3.17 TohTimeSettingLabel

Time setting has 37 properties, details as following:

- 3.17.1 Align : Component alignment, Component can follow this property to align on the upper layer automatically, value : alNone, alTop, alBottom, alLeft, alRight, alClient, please refer to 3.2.1.
- 3.17.2 Alignment : The way for text font to align horizontally, value : taLeftJustify, taRightJustify, taCenter, please refer to 3.2.2.
- 3.17.3 Authority : Input permission, user' s permission level must higher than this.
- 3.17.4 AutoSize : When the file property changes, it will adjust the component' s size automatically to show the picture completely, value : True, False.
- 3.17.5 BorderStyle : Component border styles, value : bsNone, bsSingle, bsDouble, bsRaisedPanel, bsSunkenPanel, bsRaised3d, bsSunken3d, bsEtched, bsEmbossed, please refer to 3.3.4.
- 3.17.6 Caption : Component title.
- 3.17.7 DisableColor : Components background color when disabled. Refer to color property guide.
- 3.17.8 DisableCondition : Disable condition, user cannot input when component disabled, values are: ccNone 、 ccGreater 、 ccLess 、 ccEqual 、 ccUnequal, refer to 3.4.8
- 3.17.9 DisableFontColor : Font color when component disabled, refer to color property setup.(DisableFontColor)
- 3.17.10 DisableRefBit : Reference bit of inner variable value when component disabled.(DisableRefBit)
- 3.17.11 DisableRefNo : If you want to set component disable, please refer to inner saving variable number.
- 3.17.12 DisableRefType : Component disable-inner saving variable type, value : rtR, rtParameter, rtl, rtO, rtC, rtS, rtA, rtTimer, rtCounter, please refer to 3.2.17
- 3.17.13 DisableRefValue : Reference value when component disabled. : 元件除能要參考的數值。
- 3.17.14 FocusColor : Focus is on the component' s background color, please refer to color property of the setting method
- 3.17.15 FocusFontColor : Focus is on the component' s font color, please refer to color property of the setting method.
- 3.17.16 FontBold : Component use bold font, value : True, False.
- 3.17.17 FontColor : Focus is not on component' s font color, please refer to color property of the setting method.
- 3.17.18 FontHeight : Font' s heights, value : fh16, fh20, fh32, please refer to 3.1.5.
- 3.17.19 Height : Component' s height.
- 3.17.20 HideCondition : Component' s hidden condition, value : ccNone, ccGreater, ccLess, ccEqual, ccUnequal, please refer to 3.2.14.

Date	2011/10/13	Page	63/ 89
-------------	------------	-------------	--------



Subject	Open HMI Page Editor Manual	Doc. No.	
----------------	------------------------------------	-----------------	--

- 3.17.21 HideRefBit : Component hides the reference bit of inner saving variable number.
- 3.17.22 HideRefNo : Component hides the corresponding number of inner saving variable.
- 3.17.23 HideRefType : Component hides the corresponding situation of inner saving variable, value : rtR, rtParameter, rtl, rtO, rtC, rtS, rtA, rtTimer, rtCounter, please refer to 3.2.16.
- 3.17.24 HideRefValue : The reference value when componet hides.
- 3.17.25 Layout : Layout of text, value : tlTop, tlCenter, tlBottom, please refer to 3.3.16.
- 3.17.26 Left : Component' s left side
- 3.17.27 MacroOnEnter : When component enter focus, process this macro.
- 3.17.28 MacroOnExit : When component exit focus, process this macro.
- 3.17.29 MacroOnInputted : When user inputted, process this macro.
- 3.17.30 Name : The name of component, the name cannot repeat in the same page, different page is ok.
- 3.17.31 NormalColor : Focus is not on the component' s background color, please refer to color property of the setting method.
- 3.17.32 RNo : Input inner saving variable starting number.
- 3.17.33 Tag : Component tag value, Integer is acceptable.
- 3.17.34 Top : The top location of component
- 3.17.35 Transparent : Background transparency, value : True, False.
- 3.17.36 Width : Component' s width.
- 3.17.37 WordWrap : When the text length is larger than component width, and the auto size is False, text will change line directly, value : True, False.

Date	2011/10/13	Page	64/ 89
-------------	------------	-------------	--------



Subject	Open HMI Page Editor Manual	Doc. No.	
----------------	-----------------------------	-----------------	--

3.18 TohDateTimeSettingLabel

Date and time has 37 properties, details as following:

- 3.18.1 Align : Component alignment, Component can follow this property to align on the upper layer automatically, value : alNone, alTop, alBottom, alLeft, alRight, alClient, please refer to 3.2.1.
- 3.18.2 Alignment : The way for text font to align horizontally, value : taLeftJustify, taRightJustify, taCenter, please refer to 3.2.2.
- 3.18.3 Authority : Input permission, user' s permission level must higher than this.
- 3.18.4 AutoSize : When the file property changes, it will adjust the component' s size automatically to show the picture completely, value : True, False.
- 3.18.5 BorderStyle : Component border styles, value : bsNone, bsSingle, bsDouble, bsRaisedPanel, bsSunkenPanel, bsRaised3d, bsSunken3d, bsEtched, bsEmbossed, please refer to 3.3.4.
- 3.18.6 DisableColor : Components background color when disabled. Refer to color property guide.
- 3.18.7 DisableCondition : Disable condition, user cannot input when component disabled, values are: ccNone 、 ccGreater 、 ccLess 、 ccEqual 、 ccUnequal, refer to 3.4.8
- 3.18.8 DisableFontColor : Font color when component disabled, refer to color property setup
- 3.18.9 DisableRefBit : Reference bit of inner variable value when component disabled.
- 3.18.10 DisableRefNo : If you want to set component disable, please refer to inner saving variable number.
- 3.18.11 DisableRefType : Component disable-inner saving variable type, value : rtR, rtParameter, rtl, rtO, rtC, rtS, rtA, rtTimer, rtCounter, please refer to 3.2.17
- 3.18.12 DisableRefValue : Reference value when component disabled.
- 3.18.13 FieldType : set field format:
 - dttYear : Year
 - dttMonth : month
 - dttDay : Day
 - dttHour : Hour
 - dttMinute : Minute
 - dttSecond : Second
- 3.18.14 FocusColor : Focus is on the component' s background color, please refer to color property of the setting method.
- 3.18.15 FocusFontColor : Focus is on the component' s font color, please refer to color property of the setting method.
- 3.18.16 FontBold : Component use bold font, value : True, False.
- 3.18.17 FontColor : Focus is not on component' s font color, please refer to color property of the setting

Date	2011/10/13	Page	65/ 89
-------------	------------	-------------	--------



Subject	Open HMI Page Editor Manual	Doc. No.	
----------------	------------------------------------	-----------------	--

method.

- 3.18.18 **FontHeight** : Font's heights, value : fh16, fh20, fh32, please refer to 3.1.5.
- 3.18.19 **Height** : Component's height.
- 3.18.20 **HideCondition** : Component's hidden condition, value : ccNone, ccGreater, ccLess, ccEqual, ccUnequal, please refer to 3.2.14.
- 3.18.21 **HideRefBit** : Component hides the reference bit of inner saving variable number.
- 3.18.22 **HideRefNo** : Component hides the corresponding number of inner saving variable.
- 3.18.23 **HideRefType** : Component hides the corresponding situation of inner saving variable, value : rtR, rtParameter, rtl, rtO, rtC, rtS, rtA, rtTimer, rtCounter, please refer to 3.2.16.
- 3.18.24 **HideRefValue** : The reference value when component hides.
- 3.18.25 **Hint** : text for display at hint area.
- 3.18.26 **Layout** : Layout of text, value : tlTop, tlCenter, tlBottom, please refer to 3.3.16.
- 3.18.27 **Left** : Component's left side
- 3.18.28 **MacroOnEnter** : When component enter focus, process this macro.
- 3.18.29 **MacroOnExit** : When component exit focus, process this macro.
- 3.18.30 **MacroOnInputted** : When user inputted, process this macro.
- 3.18.31 **Name** : The name of component, the name cannot repeat in the same page, different page is ok.
- 3.18.32 **NormalColor** : Focus is not on the component's background color, please refer to color property of the setting method.
- 3.18.33 **Tag** : Component tag value, Integer is acceptable.
- 3.18.34 **Top** : The top location of component
- 3.18.35 **Transparent** : Background transparency, value : True, False.
- 3.18.36 **Width** : Component's width.
- 3.18.37 **WordWrap** : When the text length is larger than component width, and the auto size is False, text will change line directly, value : True, False.

Date	2011/10/13	Page	66/ 89
-------------	------------	-------------	--------

3.19 TohTextDisplayLabel

Text display has 26 properties, details as following

- 3.19.1 Align : Component alignment, Component can follow this property to align on the upper layer automatically, value : alNone, alTop, alBottom, alLeft, alRight, alClient, please refer to 3.2.1.
- 3.19.2 Alignment : The way for text font to align horizontally, value : taLeftJustify, taRightJustify, taCenter, please refer to 3.2.2.
- 3.19.3 AutoSize : When the file property changes, it will adjust the component' s size automatically to show the picture completely, value : True, False.
- 3.19.4 BorderStyle : Component border styles, value : bsNone, bsSingle, bsDouble, bsRaisedPanel, bsSunkenPanel, bsRaised3d, bsSunken3d, bsEtched, bsEmbossed, please refer to 3.3.4.
- 3.19.5 Caption : Component title.
- 3.19.6 Color : Component' s background color, please refer to color property of the setting method.
- 3.19.7 FontBold : Component use bold font, value : True, False.
- 3.19.8 FontColor : Focus is not on component' s font color, please refer to color property of the setting method.
- 3.19.9 FontHeight : Font' s heights, value : fh16, fh20, fh32, please refer to 3.1.5.
- 3.19.10 Height : Component' s height.
- 3.19.11 HideCondition : Component' s hidden condition, value : ccNone, ccGreater, ccLess, ccEqual, ccUnequal, please refer to 3.2.14.
- 3.19.12 HideRefBit : Component hides the reference bit of inner saving variable number.
- 3.19.13 HideRefNo : Component hides the corresponding number of inner saving variable.
- 3.19.14 HideRefType : Component hides the corresponding situation of inner saving variable, value : rtR, rtParameter, rtl, rtO, rtC, rtS, rtA, rtTimer, rtCounter, please refer to 3.2.16.
- 3.19.15 HideRefValue : The reference value when componet hides.
- 3.19.16 Layout : Layout of text, value : tlTop, tlCenter, tlBottom, please refer to 3.3.16.
- 3.19.17 Left : Component' s left side
- 3.19.18 Name : The name of component, the name cannot repeat in the same page, different page is ok.
- 3.19.19 ParentColor : Use upper component' s background color to be its background color, value : True, False.
- 3.19.20 ParentFont : Use upper component' s font to be its font. Here includes : bold, font color, font height and so on, value : True, False.
- 3.19.21 RCount : amount of inner variable values.
- 3.19.22 RNo : Starting number of inner variable values.



Subject	Open HMI Page Editor Manual	Doc. No.	
----------------	-----------------------------	-----------------	--

3.19.23 Top : The top location of component

3.19.24 Transparent : Background transparency, value : True, False.

3.19.25 Width : Component' s width.

3.19.26 WordWrap : When the text length is larger than component width, and the auto size is False, text will change line directly, value : True, False.



Subject	Open HMI Page Editor Manual	Doc. No.	
----------------	-----------------------------	-----------------	--

3.20 TohCalcDisplayLabel

31 properties in calculate display, details as following:

- 3.20.1 Align : Component alignment, Component can follow this property to align on the upper layer automatically, value : alNone, alTop, alBottom, alLeft, alRight, alClient, please refer to 3.2.1.
- 3.20.2 Alignment : The way for text font to align horizontally, value : taLeftJustify, taRightJustify, taCenter, please refer to 3.2.2.
- 3.20.3 AutoSize : When the file property changes, it will adjust the component' s size automatically to show the picture completely, value : True, False.
- 3.20.4 BorderStyle : Component border styles, value : bsNone, bsSingle, bsDouble, bsRaisedPanel, bsSunkenPanel, bsRaised3d, bsSunken3d, bsEtched, bsEmbossed, please refer to 3.3.4.
- 3.20.5 Caption : Component title.
- 3.20.6 Color : Component' s background color, please refer to color property of the setting method.
- 3.20.7 FontBold : Component use bold font, value : True, False.
- 3.20.8 FontColor : Focus is not on component' s font color, please refer to color property of the setting method.
- 3.20.9 FontHeight : Font' s heights, value : fh16, fh20, fh32, please refer to 3.1.5.
- 3.20.10 Height : Component' s height.
- 3.20.11 HideCondition : Component' s hidden condition, value : ccNone, ccGreater, ccLess, ccEqual, ccUnequal, please refer to 3.2.14.
- 3.20.12 HideRefBit : Component hides the reference bit of inner saving variable number.
- 3.20.13 HideRefNo : Component hides the corresponding number of inner saving variable.
- 3.20.14 HideRefType : Component hides the corresponding situation of inner saving variable, value : rtR, rtParameter, rtl, rtO, rtC, rtS, rtA, rtTimer, rtCounter, please refer to 3.2.16.
- 3.20.15 HideRefValue : The reference value when componet hides.
- 3.20.16 Layout : Layout of text, value : tlTop, tlCenter, tlBottom, please refer to 3.3.16.
- 3.20.17 Left : Component' s left side
- 3.20.18 Name : The name of component, the name cannot repeat in the same page, different page is ok.
- 3.20.19 ParentColor : Use upper component' s background color to be its background color, value : True, False.
- 3.20.20 ParentFont : Use upper component' s font to be its font. Here includes : bold, font color, font height and so on, value : True, False.
- 3.20.21 RefBit : The bit of component input reference number.
- 3.20.22 RefDivisor : Numbers must display after divide the inner variable value by this number.

Date	2011/10/13	Page	69/ 89
-------------	------------	-------------	--------



Subject	Open HMI Page Editor Manual	Doc. No.	
----------------	-----------------------------	-----------------	--

3.20.23 RefMultiplier : Inner variable value multiplier this number then displays.

3.20.24 RefNo : The reference number of inner variable value.

3.20.25 RefPrecision : Number of decimal places displayed. Default : -2 = Two decimal

3.20.26 RefType: Component reference type; available

value:rtR,rtParameter,rtl,rtO,rtC,rtS,rtA,rtTimer,rtCounter. Details refer to 3.2.17.

3.20.27 RefUnit : Reference unit, default : -3 (-3 power of 10) °

3.20.28 Top : The top location of component

3.20.29 Transparent : Background transparency, value : True, False.

3.20.30 Width : Component' s width.

3.20.31 WordWrap : When the text length is larger than component width, and the auto size is False, text will change line directly, value : True, False.

Date	2011/10/13	Page	70/ 89
-------------	------------	-------------	--------



Subject	Open HMI Page Editor Manual	Doc. No.	
----------------	-----------------------------	-----------------	--

3.21 TohDateTimeDisplayLabel

26 properties under date and time display label, details as following

3.21.1 Align : Component alignment, Component can follow this property to align on the upper layer

automatically, value : alNone, alTop, alBottom, alLeft, alRight, alClient, please refer to 3.2.1.

3.21.2 Alignment : The way for text font to align horizontally, value : taLeftJustify, taRightJustify, taCenter,

please refer to 3.2.2.

3.21.3 AutoSize : When the file property changes, it will adjust the component' s size automatically to show

the picture completely, value : True, False.

3.21.4 BorderStyle : Component border styles, value : bsNone, bsSingle, bsDouble, bsRaisedPanel,

bsSunkenPanel, bsRaised3d, bsSunken3d, bsEtched, bsEmbossed, please refer to 3.3.4.

3.21.5 Color : Component' s background color, please refer to color property of the setting method.

3.21.6 FontBold : Component use bold font, value : True, False.

3.21.7 FontColor : Focus is not on component' s font color, please refer to color property of the setting

method.

3.21.8 FontHeight : Font' s heights, value : fh16, fh20, fh32, please refer to 3.1.5.

3.21.9 FormatString : Date and time format, default : yyyy/mm/dd

yy : year (00-99)

yyyy : year (0000-9999)

m : Month (1-12)

mm : Month (01-12)

d : Day (1-31)

dd : Day (01-31)

h : Hour (0-23)

hh : Hour (00-23)

n : Minute (0-59)

nn : Minute (00-59)

s : Second (0-59)

ss : Second (00-59)

3.21.10 Height : Component' s height.

3.21.11 HideCondition : Component' s hidden condition, value : ccNone, ccGreater, ccLess, ccEqual,

ccUnequal, please refer to 3.2.14.

3.21.12 HideRefBit : Component hides the reference bit of inner saving variable number.

3.21.13 HideRefNo : Component hides the corresponding number of inner saving variable.

Date	2011/10/13	Page	71/ 89
-------------	------------	-------------	--------



Subject	Open HMI Page Editor Manual	Doc. No.	
----------------	------------------------------------	-----------------	--

- 3.21.14 HideRefType : Component hides the corresponding situation of inner saving variable, value : rtR, rtParameter, rtl, rtO, rtC, rtS, rtA, rtTimer, rtCounter, please refer to 3.2.16.
- 3.21.15 HideRefValue : The reference value when componet hides.
- 3.21.16 Layout : Layout of text, value : tlTop, tlCenter, tlBottom, please refer to 3.3.16.
- 3.21.17 Left : Component' s left side
- 3.21.18 Name : The name of component, the name cannot repeat in the same page, different page is ok.
- 3.21.19 ParentColor : Use upper component' s background color to be its background color, value : True, False.
- 3.21.20 ParentFont : Use upper component' s font to be its font. Here includes : bold, font color, font height and so on, value : True, False.
- 3.21.21 RNo : Inner variable number
- 3.21.22 Source : Date and Time source, value:
dtsCurrent : Current system time
dtsR : inner variable value.
- 3.21.23 Top : The top location of component
- 3.21.24 Transparent : Background transparency, value : True, False.
- 3.21.25 Width : Component' s width.
- 3.21.26 WordWrap : When the text length is larger than component width, and the auto size is False, text will change line directly, value : True, False.

Date	2011/10/13	Page	72/ 89
-------------	------------	-------------	--------



Subject	Open HMI Page Editor Manual	Doc. No.	
----------------	-----------------------------	-----------------	--

3.22 TohVersionDisplayLabel)

Version has 26 properties, details as following:

- 3.22.1 Align : Component alignment, Component can follow this property to align on the upper layer automatically, value : alNone, alTop, alBottom, alLeft, alRight, alClient, please refer to 3.2.1.
- 3.22.2 Alignment : The way for text font to align horizontally, value : taLeftJustify, taRightJustify, taCenter, please refer to 3.2.2.
- 3.22.3 AutoSize : When the file property changes, it will adjust the component' s size automatically to show the picture completely, value : True, False.
- 3.22.4 BorderStyle : Component border styles, value : bsNone, bsSingle, bsDouble, bsRaisedPanel, bsSunkenPanel, bsRaised3d, bsSunken3d, bsEtched, bsEmbossed, please refer to 3.3.4.
- 3.22.5 Caption : Component title.
- 3.22.6 Color : Component' s background color, please refer to color property of the setting method.
- 3.22.7 FontBold : Component use bold font, value : True, False.
- 3.22.8 FontColor : Focus is not on component' s font color, please refer to color property of the setting method.
- 3.22.9 FontHeight : Font' s heights, value : fh16, fh20, fh32, please refer to 3.1.5.
- 3.22.10 Height : Component' s height.
- 3.22.11 HideCondition : Component' s hidden condition, value : ccNone, ccGreater, ccLess, ccEqual, ccUnequal, please refer to 3.2.14.
- 3.22.12 HideRefBit : Component hides the reference bit of inner saving variable number.
- 3.22.13 HideRefNo : Component hides the corresponding number of inner saving variable.
- 3.22.14 HideRefType : Component hides the corresponding situation of inner saving variable, value : rtR, rtParameter, rtl, rtO, rtC, rtS, rtA, rtTimer, rtCounter, please refer to 3.2.17.
- 3.22.15 HideRefValue : The reference value when componet hides.
- 3.22.16 Layout : Layout of text, value : tlTop, tlCenter, tlBottom, please refer to 3.3.16.
- 3.22.17 Left : Component' s left side
- 3.22.18 Name : The name of component, the name cannot repeat in the same page, different page is ok.
- 3.22.19 ParentColor : Use upper component' s background color to be its background color, value : True, False.
- 3.22.20 ParentFont : Use upper component' s font to be its font. Here includes : bold, font color, font height and so on, value : True, False.
- 3.22.21 RCount : inner variable value :
vrc1 : use 1 inner variable value, display main version number: e.g. 01.04.00.04.36 ◦

Date	2011/10/13	Page	73/ 89
-------------	------------	-------------	--------



Subject	Open HMI Page Editor Manual	Doc. No.	
----------------	-----------------------------	-----------------	--

vrc2 : use 2 inner variable values , display full version number e.g.: 01.04.00.04.36_010000 °

3.22.22 RNo : use inner variable value's starting number

3.22.23 Top : The top location of component

3.22.24 Transparent : Background transparency, value : True, False.

3.22.25 Width : Component' s width.

3.22.26 WordWrap : When the text length is larger than component width, and the auto size is False, text will change line directly, value : True, False.

Date	2011/10/13	Page	74/ 89
-------------	------------	-------------	--------



Subject	Open HMI Page Editor Manual	Doc. No.	
----------------	-----------------------------	-----------------	--

3.23 TohSystemModelDisplayLabel

Sys mode has 25 properties, details as following

- 3.23.1 Align : Component alignment, Component can follow this property to align on the upper layer automatically, value : alNone, alTop, alBottom, alLeft, alRight, alClient, please refer to 3.2.1.
- 3.23.2 Alignment : The way for text font to align horizontally, value : taLeftJustify, taRightJustify, taCenter, please refer to 3.2.2.
- 3.23.3 AutoSize : When the file property changes, it will adjust the component' s size automatically to show the picture completely, value : True, False.
- 3.23.4 BorderStyle : Component border styles, value : bsNone, bsSingle, bsDouble, bsRaisedPanel, bsSunkenPanel, bsRaised3d, bsSunken3d, bsEtched, bsEmbossed, please refer to 3.3.4.
- 3.23.5 Caption : Component title.
- 3.23.6 Color : Component' s background color, please refer to color property of the setting method.
- 3.23.7 FontBold : Component use bold font, value : True, False.
- 3.23.8 FontColor : Focus is not on component' s font color, please refer to color property of the setting method.
- 3.23.9 FontHeight : Font' s heights, value : fh16, fh20, fh32, please refer to 3.1.5.
- 3.23.10 Height : Component' s height.
- 3.23.11 HideCondition : Component' s hidden condition, value : ccNone, ccGreater, ccLess, ccEqual, ccUnequal, please refer to 3.2.14.
- 3.23.12 HideRefBit : Component hides the reference bit of inner saving variable number.
- 3.23.13 HideRefNo : Component hides the corresponding number of inner saving variable.
- 3.23.14 HideRefType : Component hides the corresponding situation of inner saving variable, value : rtR, rtParameter, rtl, rtO, rtC, rtS, rtA, rtTimer, rtCounter, please refer to 3.2.17.
- 3.23.15 HideRefValue : The reference value when componet hides.
- 3.23.16 Layout : Layout of text, value : tlTop, tlCenter, tlBottom, please refer to 3.3.16.
- 3.23.17 Left : Component' s left side
- 3.23.18 Name : The name of component, the name cannot repeat in the same page, different page is ok.
- 3.23.19 ParentColor : Use upper component' s background color to be its background color, value : True, False.
- 3.23.20 ParentFont : Use upper component' s font to be its font. Here includes : bold, font color, font height and so on, value : True, False.
- 3.23.21 RNo : use inner variable value's starting number
- 3.23.22 Top : The top location of component

Date	2011/10/13	Page	75/ 89
-------------	------------	-------------	--------



Subject	Open HMI Page Editor Manual	Doc. No.	
----------------	-----------------------------	-----------------	--

3.23.23 Transparent : Background transparency, value : True, False.

3.23.24 Width : Component' s width.

3.23.25 WordWrap : When the text length is larger than component width, and the auto size is False, text will change line directly, value : True, False.



Subject	Open HMI Page Editor Manual	Doc. No.	
----------------	-----------------------------	-----------------	--

3.24 TohSystemStateDisplayLabel

SYS status has 25 properties, refer to 3.23 SYS mode display setting


Subject	Open HMI Page Editor Manual	Doc. No.	
----------------	-----------------------------	-----------------	--

3.25 TohShape

16 properties in shape, details as following


3.25.1 Align : Component alignment, Component can follow this property to align on the upper layer automatically, value : alNone, alTop, alBottom, alLeft, alRight, alClient, please refer to 3.2.1.

3.25.2 BrushStyle : Component's back ground style, value :

bsSolid : Solid 

bsClear : Empty 

bsHorizontal : Horizontal line 

bsVertical : Vertical line 

bsFDiagonal : Backslash 

bsBDiagonal : Slash 

bsCross : Crossline 

bsDiagCross : Crossline 

bsDense1 : Mist 1(Dark) 

bsDense2 : Mist2 

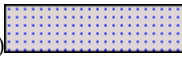
bsDense3 : Mist3 

bsDense4 : Mist4 

bsDense5 : Mist5 

bsDense6 : Mist6 

Subject	Open HMI Page Editor Manual	Doc. No.	
----------------	------------------------------------	-----------------	--

bsDense7 : Mist7(lightest) 

- 3.25.3 Color : Component's back ground color, please refer to color property of the setting method.
- 3.25.4 Height : Component' s height.
- 3.25.5 HideCondition : Component' s hidden condition, value : ccNone, ccGreater, ccLess, ccEqual, ccUnequal, please refer to 3.2.14.
- 3.25.6 HideRefBit : Component hides the reference bit of inner saving variable number.
- 3.25.7 HideRefNo : Component hides the corresponding number of inner saving variable.
- 3.25.8 HideRefType : Component hides the corresponding situation of inner saving variable, value : rtR, rtParameter, rtl, rtO, rtC, rtS, rtA, rtTimer, rtCounter, please refer to 3.2.17.
- 3.25.9 HideRefValue : The reference value when componet hides.
- 3.25.10 Left : Component' s left side
- 3.25.11 Name : The name of component, the name cannot repeat in the same page, different page is ok.
- 3.25.12 PenColor : The color of frame, please refer to color property of the setting method.
- 3.25.13 PenWidth : The width of frame
- 3.25.14 Shape : Component shape :
 - stRectangle : Rectangle
 - setsquare : Square
 - stRoundRect : Round rectangle
 - stRoundSquare : Round square
 - stEllipse : Ellipse
 - stCircle : Circle.
- 3.25.15 Top : The top location of component
- 3.25.16 Width : Component' s width.



Subject	Open HMI Page Editor Manual	Doc. No.	
----------------	-----------------------------	-----------------	--

3.26 TohMultimage

Multi image has 22 properties, as following

- 3.26.1 Align : Component alignment, Component can follow this property to align on the upper layer automatically, value : alNone, alTop, alBottom, alLeft, alRight, alClient, please refer to 3.2.1.
- 3.26.2 AutoSize : When the file property changes, it will adjust the component' s size automatically to show the picture completely, value : True, False.
- 3.26.3 Center : Align to the center, value : True, False
- 3.26.4 ChangeCondition : multiple image components need the change orders, values:
 - ciRValue : image defends by inner variable value.
 - ciAuto : auto show every images
 - ciRValueAuto : if the selected inner value not 0, it will auto show every images.
- 3.26.5 ChangeImageRBit : Select the image changing Bit of inner variable value.
- 3.26.6 ChangeImageRNo : number of image changing inner variable value.
- 3.26.7 FileName : File name, you need to put the picture into project directory firstly, then it will show on the page, supporting files : ico, xpm, png, bmp, ddw, jpg.
- 3.26.8 Height : Component' s height.
- 3.26.9 HideCondition : Component' s hidden condition, value : ccNone, ccGreater, ccLess, ccEqual, ccUnequal, please refer to 3.2.14.
- 3.26.10 HideRefBit : Component hides the reference bit of inner saving variable number.
- 3.26.11 HideRefNo : Component hides the corresponding number of inner saving variable.
- 3.26.12 HideRefType : Component hides the corresponding situation of inner saving variable, value : rtR, rtParameter, rtl, rtO, rtC, rtS, rtA, rtTimer, rtCounter, please refer to 3.2.17.
- 3.26.13 HideRefValue : The reference value when componet hides.
- 3.26.14 ImageHeight : single image height, not total height.
- 3.26.15 ImageWidth : single image width, not total width.
- 3.26.16 Left : Component' s left side
- 3.26.17 MacroOnImageChange : When component change image, process this macro.
- 3.26.18 Name : The name of component, the name cannot repeat in the same page, different page is ok.
- 3.26.19 Stretch : Auto zoom original picture to make it fulfill the total component, value : True, False.
- 3.26.20 Top : The top location of component
- 3.26.21 Transparent : Background transparency, value : True, False.
- 3.26.22 Width : Component' s width.

Date	2011/10/13	Page	80/ 89
-------------	------------	-------------	--------



Subject	Open HMI Page Editor Manual	Doc. No.	
----------------	-----------------------------	-----------------	--

3.27 TohAnimation

Animation has 12 properties, details as following.

- 3.27.1 Align : Component alignment, Component can follow this property to align on the upper layer automatically, value : alNone, alTop, alBottom, alLeft, alRight, alClient, please refer to 3.2.1.
- 3.27.2 AutoSize : When the file property changes, it will adjust the component' s size automatically to show the picture completely, value : True, False.
- 3.27.3 Center : Align to the center, value : True, False
- 3.27.4 Color : Component' s background color, please refer to color property of the setting method.
- 3.27.5 FileName : File name, you need to put the picture into project directory firstly, then it will show on the page, supporting files : ico, xpm, png, bmp, ddw, jpg.
- 3.27.6 Height : Component' s height.
- 3.27.7 Left : Component' s left side
- 3.27.8 Name : The name of component, the name cannot repeat in the same page, different page is ok.
- 3.27.9 ParentColor : Use upper component' s background color to be its background color, value : True, False.
- 3.27.10 Stretch : Auto zoom original picture to make it fulfill the total component, value : True, False.
- 3.27.11 Top : The top location of component
- 3.27.12 Width : Component' s width.

Date	2011/10/13	Page	81/ 89
-------------	------------	-------------	--------

3.28 TohAnimatedCell

Animation sub components have 16 properties:

3.28.1 DrawingOrder : Orders define the sub components' play order. Lower number will show first, higher number will cover the previous one.

3.28.2 FileName : File name, you need to put the picture into project directory firstly, then it will show on the page, supporting files : ico, xpm, png, bmp, ddw, jpg.

3.28.3 Height : Component' s height.

3.28.4 ImageMaxX : This defines the horizontal moving range, the max coordinate may not at right side. It defines by machine axis type, take the horizontal injection machine as example: coordinate of Holding mode at right side end, but mold cylinder's max coordinate locates at left end. During setting up, you can move this component to horizontal max coordinate, then set up the "imageMaxX" value send to these properties. Note: Must set 『Parent animate cell』 then set this properties.

3.28.5 ImageMaxY : This defines this component's vertical max coordinate. Note: Must set 『Parent animate cell』 then set this properties.

3.28.6 ImageMinX : This defines this component's horizontal minima corrodinate. Note: Must set 『Parent animate cell』 then set this properties.

3.28.7 ImageMinY : This defines this component's vertical minima coordinate. Note: Must set 『Parent animate cell』 then set this properties.

3.28.8 ImageX : 『Parent animate cell』 horizontal location.

3.28.9 ImageY : 『Parent animate cell』 vertical location.

3.28.10 MachinePosRNo : set the inner variable number for machine coordinate.

3.28.11 MachineStrokeRNo : Set the inner variable number for machine trip.

3.28.12 Name : The name of component, the name cannot repeat in the same page, different page is ok.

3.28.13 ParentCell : Set this component connect with which sub animate cell, when parent cell moves this components will follow up.

3.28.14 Reverse : Reverse the animate axis, value: True 、 False ◦

3.28.15 Transparent : Background transparency, value : True, False.

3.28.16 Width : Component' s width.

3.29 TohMultImageAnimatedCell

Multiple image animation cells have 19 properties, as following.

3.29.1 ChangeCondition : multiple image components need the change orders, values:

ciRValue : image defines by inner variable value.

ciAuto : auto show every images

ciRValueAuto : if the selected inner value not 0, it will auto show every images.

3.29.2 ChangImageRBit : Select the image changing Bit of inner variable value.

3.29.3 ChangImageRNo : number of image changing inner variable value.

3.29.4 DrawingOrder : Orders define the sub components' play order. Lower number will show first, higher number will cover the previous one.

3.29.5 FileName : File name, you need to put the picture into project directory firstly, then it will show on the page, supporting files : ico, xpm, png, bmp, ddw, jpg.

3.29.6 ImageHeight : each image height, not total height.

3.29.7 ImageMaxX : This defines the horizontal moving range, the max coordinate may not at right side. It defines by machine axis type, take the horizontal injection machine as example: coordinate of Holding mode at right side end, but mold cylinder's max coordinate locates at left end. During setting up, you can move this component to horizontal max coordinate, then set up the "imageMaxX" value send to these properties. Note: Must set 『Parent animate cell』 then set this properties.

3.29.8 ImageMaxY : This defines this component's vertical max coordinate. Note: Must set 『Parent animate cell』 then set this properties.

3.29.9 ImageMinX : This defines this component's horizontal minima coordinate. Note: Must set 『Parent animate cell』 then set this properties.

3.29.10 ImageMinY : This defines this component's vertical minima coordinate. Note: Must set 『Parent animate cell』 then set this properties.

3.29.11 ImageWidth : each image width, not total width.

3.29.12 ImageX : 『Parent animate cell』 horizontal location.

3.29.13 ImageY : 『Parent animate cell』 vertical location.

3.29.14 MachinePosRNo : set the inner variable number for machine coordinate.

3.29.15 MachineStrokeRNo : Set the inner variable number for machine trip.

3.29.16 Name : The name of component, the name cannot repeat in the same page, different page is ok.

3.29.17 ParentCell : Set this component connect with which sub animate cell, when parent cell moves this components will follow up.



Subject	Open HMI Page Editor Manual	Doc. No.	
----------------	-----------------------------	-----------------	--

3.29.18 Reverse : Reverse the animate axis, value: True 、 False 。

3.29.19 Transparent : Background transparency, value : True, False.

3.30 TohPageTimer

Page timer has 7 properties:

3.30.1 Comment : Comment will show after the name in component browser.

3.30.2 Enabled : Set the timer process selected macro or not, True for process macro, false for not process timer macro.

3.30.3 Interval : timer macro Interval time, unit: ms.

3.30.4 Left : Component' s left side

3.30.5 MacroOnTimer : Set page timer process macro name.

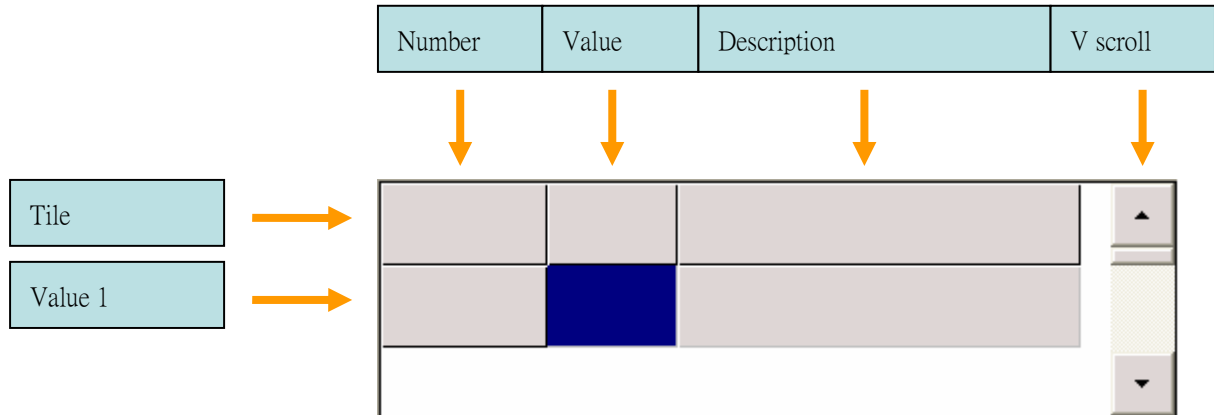
3.30.6 Name : The name of component, the name cannot repeat in the same page, different page is ok.

3.30.7 Top : The top location of component

Subject	Open HMI Page Editor Manual	Doc. No.	
----------------	-----------------------------	-----------------	--

3.31 TohFunctionGrid

As picture (27), function chart has 50 properties:



Picture (27)

3.31.1 Align : Component alignment, Component can follow this property to align on the upper layer automatically, value : alNone, alTop, alBottom, alLeft, alRight, alClient, please refer to 3.2.1.

3.31.2 Authority : Input permission, user's permission level must higher than this.

3.31.3 Color : Component's background color, please refer to color property of the setting method.

3.31.4 ColumnDescriptionCaption : description Title.

3.31.5 ColumnDescriptionVisible : Display the title or not.

3.31.6 ColumnDescriptionWidth : description width

3.31.7 ColumnNumberAlignment : Number column align value: taLeftJustify、taRightJustify、taCenter, refer to 3.2.2

3.31.8 ColumnNumberCaption : Number column title

3.31.9 ColumnNumberShowKind : Number column value:

nskActualNumber : show R value

nskSerialNumber : show serial number 1,2,3,4.

3.31.10 ColumnNumberVisible : show the number column on chat or not.

3.31.11 ColumnNumberWidth : Number column width

3.31.12 ColumnValueAlignment : value column align value: taLeftJustify、taRightJustify、taCenter, refer to 3.2.2

3.31.13 ColumnValueCaption : Value column title

3.31.14 ColumnValueWidth : Value Colum width

3.31.15 DisableColor : Components background color when disabled. Refer to color property guide.

3.31.16 DisableCondition : Disable condition, user cannot input when component disabled, values are:



Subject	Open HMI Page Editor Manual	Doc. No.	
----------------	------------------------------------	-----------------	--

ccNone、ccGreater、ccLess、ccEqual、ccUnequal, refer to 3.4.8

- 3.31.17 DisableFontColor : Font color when component disabled, refer to color property setup.
- 3.31.18 DisableRefBit : Reference bit of inner variable value when component disabled.
- 3.31.19 DisableRefNo : If you want to set component disable, please refer to inner saving variable number.
- 3.31.20 DisableRefType : Component disable-inner saving variable type, value : rtR, rtParameter, rtl, rtO, rtC, rtS, rtA, rtTimer, rtCounter, please refer to 3.2.17
- 3.31.21 DisableRefValue : Reference value when component disabled.
- 3.31.22 FieldCaptionColor : Title background color, please refer to color properties.
- 3.31.23 FieldCaptionFontColor : Each tile's font color setting, refer to color properties.
- 3.31.24 FocusColor : Focus is on the component's background color, please refer to color property of the setting method.
- 3.31.25 FocusFontColor : Focus is on the component's font color, please refer to color property of the setting method.
- 3.31.26 FontBold : Component use bold font, value : True, False.
- 3.31.27 FontColor : Focus is not on component's font color, please refer to color property of the setting method.
- 3.31.28 FontHeight : Font's heights, value : fh16, fh20, fh32, please refer to 3.1.5.
- 3.31.29 Height : Component's height.
- 3.31.30 HideCondition : Component's hidden condition, value : ccNone, ccGreater, ccLess, ccEqual, ccUnequal, please refer to 3.2.14.
- 3.31.31 HideRefBit : Component hides the reference bit of inner saving variable number.
- 3.31.32 HideRefNo : Component hides the corresponding number of inner saving variable.
- 3.31.33 HideRefType : Component hides the corresponding situation of inner saving variable, value : rtR, rtParameter, rtl, rtO, rtC, rtS, rtA, rtTimer, rtCounter, please refer to 3.2.16.
- 3.31.34 HideRefValue : The reference value when component hides.
- 3.31.35 Left : Component's left side
- 3.31.36 LinkFunctionGrid : Link other function grid, for synchronize source. Due to the scroll bar may not on top, so displayed value may be not 1st value. E.g. linked 1st column is the 20th value at R value chart, this chart will display the 20th R value.
- 3.31.37 MacroOnEnter : When component enter focus, process this macro.
- 3.31.38 MacroOnExit : When component exit focus, process this macro.
- 3.31.39 MacroOnInputted : When user inputted, process this macro.
- 3.31.40 Name : The name of component, the name cannot repeat in the same page, different page is ok.
- 3.31.41 ParentColor : Use upper component's background color to be its background color, value : True,

Date	2011/10/13	Page	86/ 89
-------------	------------	-------------	--------



Subject	Open HMI Page Editor Manual	Doc. No.	
----------------	-----------------------------	-----------------	--

False.

3.31.42 ParentFont : Use upper component' s font to be its font. Here includes : bold, font color, font height and so on, value : True, False.

3.31.43 RNumberTable : Set R number table for reference source, function chart will display the number, value and description by order.

3.31.44 RowHeight : Set row height

3.31.45 RPrecision : Decimal places, default :-2, two decimal places

3.31.46 Tag : components tag value, integer is acceptable.

3.31.47 Top : The top location of component

3.31.48 VScrollBarVisible : display vertical scroll or not.

3.31.49 VScrollBarWidth : Set the V scroll bar width

3.31.50 Width : Component' s width.

Date	2011/10/13	Page	87/ 89
-------------	------------	-------------	--------

Subject	Open HMI Page Editor Manual	Doc. No.	
----------------	-----------------------------	-----------------	--

4 Color properties

3 properties to set colors,

4.1 use mouse to double click color properties, then select the color from color window

4.2 select the color from list.

4.3 Input color value, the format has 2 types: 1: number 2: color.

4.3.1 Number : number orders are "Blue,Green,red" Example: Blue= 213(HEX=D5), Green=214(HEX=D6), Red=222(HEX=DE), use 0xD5D6DE or \$D5D6DE or 14014174.

4.3.2 Color: Available values:

clBlack : 

clMaroon : 

clGreen : 

clOlive : 

clNavy : 

clPurple : 

clTeal : 

clGray : 

clSilver : 

clRed : 

clLime : 

clYellow : 

Date	2011/10/13	Page	88/ 89
-------------	------------	-------------	--------



Subject	Open HMI Page Editor Manual	Doc. No.	
----------------	-----------------------------	-----------------	--

clBlue : 

clFuchsia : 

clAqua : 

clWhite : 